



2006 RENTAL CATALOG

1340 W. BYERS PL.

DENVER, CO. 80223

(303) 698-1797

FAX (303) 698-1799

e-mail info@camren.com

www.camren.com

Hours: Monday-Friday 8am-5:30pm

Effective 10/27/06

This page left blank intentionally.

Table of Contents

35MM	
Nikon	4-5
Canon	5-6
Tamron	6
35mm Point and Shoot	6
MEDIUM FORMAT	
Hasselblad	7
Mamiya 645	7-8
Mamiya 7 Rangefinder	8
Mamiya RB/RZ67	8
Bronica	9
Pentax 6x7	9
Pentax 645.	9
LARGE FORMAT	
4x5 Cameras	10
8x10 Cameras	10
View Camera Lenses	10
DIGITAL	11-14
ULTRA-WIDE PANORAMIC CAMERAS	15
POLAROID	15
UNDERWATER CAMERAS	15
STUDIO FLASH	
Speedotron	16
Norman	16
Broncolor	16
Balcar	16
Sunpak	16
Photogenic.	16
PORTABLE FLASH	
On-Camera Flash	17
Norman	17
Sunpak	17
Quantum	17
Flash Accessories	17
TUNGSTEN LIGHTING	17
METERS	18
CAMERA SYNCs/TRIPPERS	18
GRIP EQUIPMENT	18-19
CAMERA SUPPORT	19
SOFTBOXES UMBRELLAS	19
AUDIO/VISUAL EQUIPMENT	20
VIDEO EQUIPMENT	20-21
SPECIAL EQUIPMENT	21
DEALER LIST	22
FACILITIES RENTAL INFORMATION	23
BACKGROUNDS	see our web site at http://www.camren.com

35MM

NIKON

Bodies

FE/FE2/FM2/F3	15.00
F2-AS	20.00
N90	20.00
N90S (w/MB 10 vertical grip.)	20.00
F5	35.00
F100	25.00

Lenses

Wide-angle Lenses

8mm F4 circular fisheye (Sigma)	22.5 between lens	25.00
DX 10.5mm F2.8 AF G ED	drop-in gel	25.00
(For use w/Nikon F mount digital SLR's. Will vignette on film cameras.)		
14mm F3.5 rectilinear (Sigma)	drop-in gel	20.00
14mm F2.8 AF rectilinear (Tamron)	drop-in gel	25.00
16mm F2.8 full frame fisheye	rear bayonet	20.00
16mm F2.8 AF full frame fisheye	rear bayonet	25.00
18mm F2.8 AF	77mm	25.00
20mm F2.8 AF	62mm	12.00
24mm F2.8	52mm	8.00
28mm F2.8 AF	52mm	8.00
28mm F3.5 perspective control	72mm	20.00
35mm F2.8 perspective control	52mm	20.00
35mm F2.8	52mm	8.00
35mm F1.4	52mm	15.00

Normal Lenses

50mm F1.4,1.4 AF, 1.8E, 2.0	52mm	5.00
-----------------------------	------	------

Telephoto Lenses

85mm F1.8	52mm	10.00
85mm F1.8 AF	52mm	15.00
105mm F2.5	52mm	8.00
180mm F2.8 AF ED	72mm	20.00
300mm F2.8 D EDIF AF-S	drop-in 52mm	40.00
300mm F2.8 EDIF AF-D	drop-in 39mm	35.00
300mm F4 AF-S	77mm	20.00
300mm F4.5	72mm	15.00
400mm F2.8 D EDIF AF-S	drop-in 52mm	75.00
500mm F4.0 D EDIF AF-S	drop-in 52mm	60.00
500mm F8.0 mirror	rear 39mm	20.00
600mm F4.0 EDIF	drop-in 39mm	60.00
600mm F4.0 D EDIF AF-S	drop-in 52mm	100.00

Macro Lenses

55mm F2.8 micro	52mm	15.00
60mm F2.8AF micro	62mm	20.00

Zoom Lenses

DX 12-24mm F4.0 AF-S G	77mm	25.00
(For use w/Nikon F mount digital SLR's. Will vignette from 12 to 17mm on film cameras.)		
DX 17-55mm F2.8 AF-S G	77mm	25.00
(For use w/Nikon F mount digital SLR's. Will vignette from 17 to 28mm on film cameras.)		
17-35mm F2.8 EDIF AF-S	77mm	25.00
20-35mm F2.8 AF	77mm	20.00
24-70mm F3.5/5.6 AF (Tamron)	62mm	10.00
24-85mm F2.8/4 AF D	72mm	20.00
24-120mm F3.5/5.6 AF-D	72mm	20.00
24-120mm F3.5/5.6 AF-S VR	72mm	25.00
28-70mm F3.5/4.5 AF (Tamron)	52mm	10.00
28-75mm F2.8 AF LD (Tamron)	67mm	20.00
28-85mm F3.5/4.5 AF	62mm	15.00
28-105mm F2.8 AF LD (Tamron)	82mm	25.00
35-70mm F3.3/4.5 AF	52mm	10.00
35-90mm F4/5.6 AF (Tamron)	55mm	10.00
35-105mm F3.5/4.5 macro	52mm	10.00
35-105mm F3.5/4.5 AF	52mm	10.00
70-200mm F2.8G AF-S VR	77mm	35.00
70-210mm F4.5/5.6 AF (Tamron)	52mm	15.00
70-300mm F4/5.6 AF-D LD (Tamron)	58mm	15.00
80-200mm F2.8 EDIF AF-S	77mm	30.00
80-200mm F2.8 EDIF AF-D	77mm	25.00
200-400mm F5.6 AF-D (Tamron)	77mm	25.00

DX Digital Lenses

(For use primarily with digital SLR's. These lenses are designed to work on smaller chip cameras. These lenses will vignette on 35mm SLR at the wider focal lengths.)

DX 10.5mm F2.8 AF G	drop-in gel	25.00
(For use w/Nikon F mount digital SLR's. Will vignette on film cameras.)		
DX 12-24mm F4.0 AF-S G	77mm	25.00
(For use w/Nikon F mount digital SLR's. Will vignette from 12 to 17mm on film cameras.)		
DX 17-55mm F2.8 AF-S G	77mm	25.00
(For use w/Nikon F mount digital SLR's. Will vignette from 17 to 28mm on film cameras.)		

Motor Drives

MD-12 motor for FE/FM series	5.00
MD-4 motor for F3	10.00
MD-2 w/MBI motor for F2	10.00

Accessories

MC 12A remote release	2.00
MC 25 (adaptor for remote accessories.)	1.00
MF-26 data back	10.00
MB-10	5.00
Extension tubes: 11mm, 18mm, or 36mm	2.00
TC 14E	10.00
(Will auto-focus w/AF-1 & AF-S Nikkor lenses only.)	
TC 20E	10.00
(Will auto-focus w/AF-1& AF-S Nikkor lenses only.)	
TC300	5.00
1.4X AF teleconverter (Tamron)	8.00
(Will not auto-focus w/AF-S lenses.)	
2X AF teleconverter (Tamron)	8.00
(Will not auto-focus w/AF-S lenses.)	
PK-13 extension tube for 1:1 ratio w/55mm micro	2.00
Bellows.	10.00
MF-4 250 exposure back for F3	20.00
NPC Polaroid back for F3/FE/FE2/FM/FM2/N90	15.00
(P-back is 1/2 price w/rental of compatible body.)	
Infrared ML-2 remote control	20.00
(For use with Nikon cameras with motor drives, 3 channel, 300 foot range.)	
MF26 data back for N90	10.00
(Will imprint day/mo/yr or frame #, sequence #, fixed #, shutter speed/aperture. Will do interval timing, auto sequence, multiple exposure and auto bracketing. Imprints lower right corner.)	

Flashes

SB24/26	15.00
SB28	20.00
Nikon SB80DX(w/diffusion dome covers 14mm.)	20.00
(D-TTL capacity w/ Nikon digital cameras.)	
Nikon SB800 (w/diffusion dome covers 14mm.)	20.00
(iTTL & D-TTL capacity w/ Nikon digital cameras.)	
Nikon SC-17 off camera cord	3.00
Nikon SC-18 connecting cord	3.00
Nikon SC-28 off camera cord	3.00
Nikon AS-10	3.00
(Connects 3 TTL flashes together.)	

Infra-Red Slaves

Nikon ML-2	20.00
(For use w/Nikon motor drives. Requires motor drive. Maximum working distance 300ft. 3 channels available.)	

CANON EOS

Bodies

Elan/Elan IIE	15.00
A2/A2E (w/VG10)	20.00
EOS-1/1N	30.00
EOS3	25.00

Lenses

Wide-Angle Lenses

14mm F3.5 rectilinear (Sigma)	drop-in-gel	20.00
(May not be compatible with all EOS bodies.)		
15mm F2.8 full frame fisheye	drop-in-gel	20.00
20mm F2.8 USM	72mm	10.00
24mm F3.5 L tilt/shift (manual focus)	72mm	20.00
28mm F2.8	52mm	10.00
35mm F2	52mm	8.00

Normal Lenses

50mm F1.8	52mm	5.00
-----------	------	------

Telephoto Lenses

85mm F1.8 USM	58mm	15.00
90mm F2.8 tilt/shift (manual focus)	58mm	20.00
300mm F2.8 LDIF (Tamron)	drop-in 43mm	35.00
300mm F2.8 L IS USM	drop-in 48mm	40.00
300mm F4 L USM	77mm	20.00
400mm F2.8 L USM	drop-in 48mm	75.00
400mm F5.6 L USM	77mm	30.00
500mm F4.5 L USM	drop-in 48mm	50.00
600mm F4 L USM	drop-in gel	100.00

Macro Lenses

50mm F2.5 macro	52mm	15.00
65mm F2.8 macro	58mm	25.00
(Allows 1x to 5x magnification.)		

Zoom Lenses

10-22mm F3.5-4.5 USM EF-S	77mm	25.00
(Compatible with EOS 20D/30D & Digital Rebel bodies only.)		
11-18mm F4.5-5.6 Di II LD AF (Tamron)	77mm	20.00
(This lens will vignette on 35mm SLR's at the wider focal lengths.)		
16-35mm F2.8L USM	77mm	25.00
17-35mm F2.8L USM	77mm	25.00
17-55mm F2.8 IS USM EF-S	77mm	25.00
(Compatible with EOS 20D/30D & Digital Rebel bodies only.)		
19-35mm F3.5/4.5 AF (Tamron)	77mm	15.00
20-35mm F3.5/4.5 USM	77mm	10.00
24-70mm F2.8L USM	77mm	25.00

28-70mm F2.8L USM	77mm	25.00
28-75mm F2.8 LD AF (Tamron)	67mm	20.00
28-80mm F3.5/5.6III USM	58mm	10.00
28-105mm F2.8 LD AF (Tamron)	82mm	25.00
28-105mm F3.5/4.5 USM	58mm	10.00
28-135mm F3.5/5.6 IS USM	72mm	15.00
28-200mm F3.8/5.6 (Tamron)	72mm	15.00
28-300mm F3.5/6.3 LDIF (Tamron)	72mm	20.00
35-350mm F3.5/5.6 L USM	72mm	25.00
55-200mm F4.5/5.6II USM	52mm	15.00
70-200mm F2.8L USM	77mm	25.00
70-200mm F2.8L IS USM	77mm	30.00
70-300mm F4/5.6 (Tamron)	58mm	15.00
75-300mm F4/5.6II USM	58mm	15.00
200-400mm F5.6 LDIF (Tamron)	77mm	25.00

Accessories

NPC Polaroid back for EOS1/IN	15.00
(P-back is 1/2 price w/rental of compatible body.)	
1.4X AF extender	8.00
(Tamron, will work w/EOS 500mm F4.5. Will auto-focus w/ lenses F4.5 or faster.)	
Extender EF 1.4x	10.00
Extender EF 2x	10.00
(Will not work w/Tamron-EOS 300mm.)	
Extender EF 1.4x Series II	10.00
Extender EF 2x Series II	10.00
1:1 Life size converter EF w/50mm macro	2.00
Power drive booster E1 for EOS1/IN (5.5 fps)	10.00
(E1 is 1/2 price w/rental of EOS1/IN.)	
Power drive booster PB-E2 for EOS3 (7 fps)	10.00
(PB-E2 is 1/2 price w/rental of EOS3.)	
Drop in polarizer for 300mm F2.8, 400mm F2.8, 500mm F4.5 or 600mm F4	5.00
EOS-1N command back E1	10.00
(Data Imprinting function: Date, time, 6 digit code or 4 digit code combined with the letters A-F, 4 digit frame counter. Date is imprinted in the lower right-hand corner of the frame and may be used with or without timer functions. Timer Function: self-timer, interval timer, long release timer, framer counter to control the number of exposures per sequence. Timer functions can be set in one second increments for up to 23 hours, 59 minutes, 59 seconds.)	

Flashes

EOS 550 EX (w/diffuser covers 18mm)	20.00
(E-TTL capacity w/ EOS digital cameras.)	
EOS 580 EX (w/diffuser covers 18mm)	20.00
(E-TTL II capacity with select EOS digital cameras)	
Canon off-camera shoe cord 2	5.00

TAMRON

35mm Lenses

(Tamron adaptall lenses to fit Canon FD & EOS, Chinon, Contax, Konica, Minolta MD & Maxxum, Nikon, Olympus, Pentax, Ricoh, Yashica, and Universal screw mount.)

All lenses include mount.

Wide-Angle Lenses

17mm F3.5	N/A	15.00
24mm F2.5	55mm	8.00
28mm F2.5	49mm	8.00

Telephoto Lenses

90mm F2.5 macro (Gives 1:2 ratio.)	55mm	15.00
180mm F2.5 LD	77mm	15.00
300mm F2.8 LDIF	drop-in 43/112mm	25.00
400mm F4 LDIF	drop-in 43/112mm	40.00
600mm F4.0	NA	60.00

Zoom Lenses

28-70 F3.5/4.5	52mm	10.00
28-200 F3.8/5.6	72mm	15.00
35-105 F2.8 LD	67mm	25.00
70-210 F4/5.6	52mm	15.00
80-200 F2.8 LD	77mm	25.00
60-300 F3.8/5.4	62mm	20.00

Accessories

1.4X Teleconverter	5.00
(Will not work w/Tamron 300mm F2.8.)	
2X Teleconverter	2.00
(Will work w/Tamron 300mm F2.8.)	
Extension tube for 90mm micro	2.00
(Gives 1:1 ratio.)	

35MM POINT AND SHOOT

Canon Sure Shot A1 underwater panoramic	10.00
---	-------

MEDIUM FORMAT

HASSELBLAD (2 1/4 X 2 1/4)

Bodies

503CX w/WL finder and back	25.00
500CM w/WL finder and back	22.00
SWC 903 w/finder and back	35.00

Lenses

30mm F3.5 CFi	between lens	45.00
40mm F4.0 C	N/A	30.00
50mm F4.0 CF	bay 60	25.00
60mm F3.5 CF	bay 60	20.00
80mm F2.8 CF	bay 60	15.00
100mm F3.5 C	bay 50	15.00
120mm F5.6 C	bay 50	20.00
150mm F4.0 C/CF	bay 50/60	25.00
250mm F5.6 C	bay 50	25.00
350mm F5.6C	N/A	25.00
500mm F8.0 C	N/A	30.00

Close-up Accessories

Extension tube (10mm, 16mm, 21mm, 55mm, 56mm)	3.00
Series 50 Proxar (I, II, or III)	3.00
Bellows	10.00

Filters (Bay 50/60)

Bay 50 Softar (I, II, or III)	3.00
Bay 50 red/orange/polarizer	3.00
Bay 60 Tiffen Soft FX, polarizer, star, CC30M, UV	3.00
Bay 60 to 77mm step-up ring	1.00

Viewfinders

NC-2 prism finder	10.00
PM5 prism finder	10.00
PME-3 meter prism finder	15.00

Accessories

Rokunar 2x converter	10.00
Ground glass adapter	3.00
NPC motor for 500C/500CM (1 fps)	10.00
Pro Shade for B50 or B60	8.00

Film Backs

A12 back (12 exposures on 120 film.)	8.00
A16 back (16 exposures on 120 film.)	8.00
A24 back (24 exposures on 220 film.)	8.00
Polaroid back (Polaroid 100 or NPC)	10.00

MAMIYA 645 (2 1/4 x 1 5/8)

Bodies

M645 Pro w/WL finder and back	20.00
M645 Pro TL w/WL finder, pro drive and back	25.00

Lenses

24mm F4 ULD fisheye	built-in	30.00
35mm F3.5	77mm	20.00
45mm F2.8	77mm	15.00
55mm F2.8	58mm	15.00
70mm F2.8 leaf shutter	58mm	15.00
80mm F1.9	67mm	15.00
80mm F2.8	58mm	10.00
110mm F2.8	58mm	10.00
150mm F4.0	58mm	15.00
300mm F5.6	58mm	15.00
500mm F5.6	105mm	30.00
55-110mm F4.5	67mm	25.00
105-210mm F4.5	77mm	30.00

Viewfinders

M645 Pro AE meter prism	10.00
M645 SV Pro prism	8.00
M645 Pro prism	8.00
M645 SV AE meter prism	10.00

Accessories

2x Teleconverter (only for lenses 145mm-500mm.)	10.00
Extension tube (1, 2, or 3)	2.00
Professional lens shade	8.00
Power winder	5.00
L-Grip	2.00

Film Backs

120 film back	8.00
220 film back	8.00
120/220 inserts	2.00
Polaroid back	10.00

MAMIYA 645 AF (2 1/4 x 1 5/8)

M645 AFD body w/120/220 back 30.00

Lenses

35mm F3.5 AF 77mm 25.00
45mm F2.8 AF 67mm 20.00
55mm F2.8 AF 58mm 20.00
80mm F2.8 AF 58mm 15.00
150mm F3.5 AF 58mm 20.00
55-110mm F4.5 AF 67mm 25.00

Accessories

M645 AF film back 8.00
M645 AF polaroid back 15.00
M645 AF polaroid adapter 2.00

MAMIYA 7II RANGEFINDER

Mamiya 7II body 20.00

Lenses

43mm F4.5 67mm 25.00
65mm F4.0 58mm 20.00
80mm F4.0 58mm 15.00
150mm F4.5 67mm 20.00
Mamiya 7 body and all lenses package 75.00

MAMIYA RB67 (2 1/4 X 2 3/4)

Bodies

RB67/RB67 Pro SD body w/WL finder and back 20.00

Lenses

(RB67 lenses will work on RZ67 bodies but you will lose the electronics.)

37mm F4.5 fisheye w/filter set rear 40.5mm 30.00
50mm F4.5 77mm 20.00
65mm F4.5 77mm 20.00
90mm F3.8 77mm 15.00
127mm F3.8 77mm 15.00
140mm F4.5 macro 77mm 20.00
150mm F4.0 (soft focus w/disc set) 77mm 20.00
180mm F4.5 77mm 15.00
250mm F4.5 77mm 20.00
500mm F8.0 N/A 30.00

Accessories

RB67 extension tube (#1 or #2) 2.00
RB67 prism finder 10.00
L-grip for RB/RZ67 2.00
Professional lens shade 8.00
Dual cable release 3.00

RB67 Film Backs

(All RZ67/RB67 Pro II backs are interchangeable between bodies.
RB67 backs will work on RZ67 bodies with the RZ Pro adapter G.
We rent this adapter. It will not work on Polaroid backs.)

RB67 polaroid backs 10.00
RB67 120 back (10 exposures) 8.00
RB67 220 back (20 exposures) 8.00
RB67 120 back-645 format (15 exposures) 8.00

MAMIYA RZ67 (2 1/4x2 3/4)

Bodies

RZ67/RZ67 Pro II body w/WL finder and back 25.00

Lenses

(RB67 lenses will work on RZ67 bodies but you will lose the electronics.)

50mm F4.5 77mm 20.00
75mm F4.5 L SB 105mm 20.00
(Requires SB extension tube to focus to infinity w/o tilt/shift adapter.)
90mm F3.8 77mm 15.00
180mm F4.5 77mm 20.00
180mm F4.5 L SB 77mm 20.00
(Requires SB extension tube to focus to infinity w/o tilt/shift adapter.)

Accessories

RZ67 tilt/shift adapter 20.00
RZ67 tilt/shift ground glass 5.00
RZ67 SB extension tube 3.00
(N/C when rented with an SB lens.)
L-Grip for RB/RZ67 2.00
Professional lens shade 8.00
RZ67 AE prism finder 15.00

RZ67 Film Backs

(All RZ67/RB67 Pro II backs are interchangeable between bodies.
RB67 backs will work on RZ67 bodies with the RZ Pro Adapter G.
We rent this adapter. It will not work on Polaroid backs.)

RZ67 polaroid backs 10.00
RZ67 Pro II 120 back 8.00
RZ67 Pro II 220 back 8.00

BRONICA ETRsi (6x4.5)

Bodies

Bronica ETRsi w/ finder and back 20.00

Lenses

40mm F4 62mm 20.00
50mm F2.8 62mm 15.00
75mm F2.8 62mm 10.00
150mm F3.5 62mm 15.00
500mm F8 95mm 30.00

Accessories

Prism 8.00

Film Backs

120 back 8.00
220 back 8.00
Polaroid back 10.00

PENTAX 6X7(2 1/4 X 2 3/4)

Bodies

Pentax 6x7 body w/TTL prism finder 20.00

Lenses

35mm F4.5 fisheye N/A 30.00
45mm F4.0 82mm 20.00
55mm F4 77mm 20.00
75mm F4.5 82mm 15.00
105mm F2.4 67mm 10.00
135mm F4.0 macro 67mm 15.00
150mm F2.8 67mm 15.00
200mm F4.0 67mm 15.00
300mm F4.0 82mm 20.00
600mm F4.0 NA 50.00

Accessories

Outer extension tubes (1,2, or 3) 2.00
Hand grip 2.00

PENTAX 645

All of the above Pentax 6x7 lenses will fit on
Pentax 645 bodies. Adapter included.

LARGE FORMAT

4x5 CAMERAS

(Camera price includes standard rail, cable release, dark cloth, changing bag, lupe, and 5 film holders upon request.)

Sinar Norma	20.00
(Need to use old style Sinar boards)	
Sinar F	20.00
Toyo 45F	20.00
Toyo 45GX	25.00

Accessories

6" extension rail (Sinar only)	3.00
12" extension rail (Sinar or Toyo)	4.00
18" extension rail (Sinar only)	5.00
Additional bellows (Sinar only)	3.00
Reflex viewer	8.00
Additional front or rear standards	15.00
Lensboards only	2.00
Sinar Pro shade	5.00
(Lensboards for Sinar, Calumet, Cambo, Toyo/Omega, Horseman, some Graflex and Linhoff.)	

Film Holders and Polaroid Backs

4x5 film holders	1.00
Polaroid 545 back	5.00
Polaroid 405 back	5.00
(Takes pack films, 3" x 4 1/4" image on 4x5 cameras.)	
Calumet 4x5 roll film back	10.00
(Takes 6x7 images with 4x5 cameras.)	

8x10 CAMERAS

(Camera price includes standard rail, cable release, darkcloth, changing bag, lupe and 5 film holders upon request).

Sinar 8x10	30.00
Lensboard only	2.00
Sinar reducing back 8x10/4x5 (for old style F only)	10.00
8x10 film holders	3.00

View Camera Lenses

	Coverage	Filter	Copal	
65mm F8.0 Super Angulon . . .	4x5	. 49mm	. 0	25.00
65mm F4.0 Nikkor SW	4x5	. 67mm	. 0	30.00
75mm F8.0 Super Angulon . . .	4x5	. 49mm	. 0	25.00
75mm F4.5 Nikkor SW	4x5	. 67mm	. 0	30.00
90mm F5.6 Schneider SA	5x7	. 82mm	. 0	30.00
90mm F8.0 Super Angulon . . .	5x7	. 67mm	. 0	25.00
90mm F8.0 Caltar IIS	4x5	. 67mm	. 0	25.00
120mm F8.0 Nikkor SW	8x10	77mm	. 0	35.00
120mm F5.6 Nikkor AM macro	4x5	. 52mm	. 0	20.00
135mm F5.6 Nikkor	4x5	. 52mm	. 0	15.00
150mm F5.6 APO Symmar . . .	4x5	. 58mm	. 0	15.00
180mm F5.6 Rodenstock	5x7	. 58mm	. 1	20.00
210mm F5.6 Fujinon W	5x7	. 58mm	. 1	25.00
210mm F5.6 Rodenstock	5x7	. 67mm	. 1	25.00
210mm F5.6 APO Symmar . . .	5x7	. 72mm	. 1	25.00
240mm F5.6 Komuranon	8x10	72mm	. 3	25.00
300mm F5.6 Fujinon L	8x10	67mm	. 3	25.00
360mm F6.8 Orbit	8x10	N/A	. 3	30.00
600mm F9 Nikkor ED-T	8x10	95mm	. 3	35.00
(16" rail for focus at infinity)				
800mm F12 Nikkor ED-T	8x10	95mm	. 3	35.00
(21" rail for focus at infinity)				
1200mm F18 Nikkor ED-T . . .	8x10	95mm	. 3	35.00
(30" rail for focus at infinity)				
Nikkor Rear Elements (600, 800, 1200)				20.00
Set of three Nikkor ED-T Lenses (600, 800, 1200)				75.00

Digital Cameras

Digital SLR's - Canon Mount

	Canon EOS Digital Rebel	Canon EOS Digital Rebel XT	Canon EOS 20D	Canon EOS 30D	Canon EOS 1D	Canon EOS 5D	Canon EOS 1Ds Mark II
Maximum Pixels	3088 x 2056	3456 x 2304	3504 x 2336	3504 x 2336	2496 x 1662	4368 x 2912	4992 x 3328
Megapixels	6.3	8.2	8.2	8.2	4.1	12.8	16.7
File format	JPEG or RAW	JPEG or RAW	JPEG or RAW	JPEG or RAW	JPEG or RAW	JPEG or RAW	JPEG or RAW
Maximum file size (saved/opened)	7 mb / 18mb	8.7mb / 22.3mb	8.7mb / 22.3mb	8.7mb / 22.3mb	4.8mb / 11.7mb	12.9mb / 37mb	14.6 .mb / 48 mb
Power Source	Lithium ion battery, AC	Lithium ion battery, AC	Lithium ion battery, AC	Lithium ion battery, AC	Ni-MH battery, AC	Lithium ion battery, AC	Ni-MH battery, AC
ISO Rating	100-1600	100-1600	100-1600	100-1600	100-3200	50-3200	50-3200
Built-in output	USB	USB	USB	USB	Firewire	Firewire / USB	Firewire/USB
Storage type card	CF I & II, microdrive	CF I & II, microdrive	CF I & II, microdrive	CF I & II, microdrive	CF I & II, microdrive	CF I & II, microdrive	CF I & II, microdrive & SD
External flash sync	Hot shoe	Hot shoe	Hot shoe, PC connection	Hot shoe, PC connection	Hot shoe, PC connection	Hot shoe, PC connection	Hot shoe, PC connection
Exposure controls	Auto, manual, shutter, aperture	Auto, manual, shutter, aperture	Auto, manual, shutter, aperture	Auto, manual, shutter, aperture	Auto, manual, shutter, aperture	Auto, manual, shutter, aperture	Auto, manual, shutter, aperture
Burst capture rate*	4 images @ 2.5 fps	14 images @ 3fps(JPEG), 5 images @ 3fps (RAW)	44 images @ 5fps(JPEG), 6 images @ 5fps (RAW)	30 images @ 5fps(JPEG), 11 images @ 5fps (RAW) , 11 images @ 5fps (RAW+JPEG)	21 images @ 8fps(JPEG), 15 images @ 8fps (RAW)	60 images @ 3fps(JPEG), 17 images @ 3fps (RAW)	32 images @ 4fps(JPEG), 11 images @ 4fps (RAW)
Lens type	Requires EOS mount lenses	Requires EOS mount lenses	Requires EOS mount lenses	Requires EOS mount lenses	Requires EOS mount lenses	Requires EOS mount lenses	Requires EOS mount lenses
Memory included	1 GB memory card	1 GB memory card	1 GB memory card	1 GB memory card	1 GB memory card	1 GB memory card	1 GB memory card
Shutter speed range	30-1/4,000 sec, bulb	30-1/8,000 sec, bulb	30-1/8,000 sec, bulb	30-1/16,000 sec, bulb	30-1/8,000 sec, bulb	30-1/4,000 sec, bulb	30-1/8,000 sec, bu
Lens Magnification	1.6x	1.6x	1.6x	1.6x	1.3x	none	none
Daily Rental price	\$75.00	\$75.00	\$90.00	\$90.00	\$100.00	\$125.00	\$200.00

* Burst rate varies with different manufacturers cards

Digital Cameras

Digital SLR's - Nikon Mount

	Nikon D-2X	Nikon D-2H	Nikon D200	Nikon D80	Nikon D70
Maximum Pixels	4288x2848	2464x1632	3872x2592	3892 x 2604	3008x2000
Megapixels	12	4.1	10.2	10.2	6.1
File format	JPEG or 12 bit NEF (RAW)	JPEG RGB, Nikon RAW or Nikon RAW + JPEG	JPEG or 12 bit NEF (RAW)	JPEG or 12 bit NEF (RAW)	JPEG, RGB-TIFF or Nikon RAW
Maximum File Size (saved/opened)	36.5mb (TIFF) / 20.7mb (NEF)	11.5mb (TIFF) / 7.9 mb (RAW)	15 mb/ 28.7 mb	9 mb/ 28.7 mb	9.41mb/ 17.3 mb
Power Source	Lithium ion battery, AC	Lithium ion battery, AC	Lithium ion battery, AC	Lithium ion battery, AC	Lithium ion battery, AC
ISO Rating	100-3200	200-6400	100-1600	100-1600	200-1600
Built-in output	USB	USB	USB	USB	USB
Storage type card	CF I & II, microdrive	CF I & II, microdrive	CF I & II, microdrive	SD Memory	CF I & II, microdrive
External flash sync	Hot shoe, PC connection	Hot shoe, PC connection	Hot shoe, PC connection	Hot shoe	Hot shoe
Exposure controls	Auto, manual, shutter, aperture	Auto, manual, shutter, aperture	Auto, manual, shutter, aperture	Auto, manual, shutter, aperture	Auto, manual, shutter, aperture
Burst Capture rate*	22 images @ 5 fps (JPEG) or 35 images @ 8fps High Speed Crop, 17 images @ 5 fps (RAW) or 29 images @ 8 fps High Speed Crop	40 images @ 7 fps (JPEG), 24 images @ 7 fps (RAW)	37 images @ 5 fps (JPEG), 22 images @ 5 fps (RAW)	100 images @ 3 fps (JPEG) , 6 images @ 3 fps (RAW)	144 images @ 3 fps
Lens Type	Requires Nikon mount lenses	Requires Nikon mount lenses	Requires Nikon mount lenses	Requires Nikon mount lenses	Requires Nikon mount lenses
Memory included	1 GB memory card	1 GB memory card	1 GB memory card	1 GB memory card	1 GB memory card
Shutter speed range	30-1/8,000 sec, bulb	30-1/8,000 sec, bulb	30-1/8,000 sec, bulb	30-1/4,000 sec, bulb	30-1/8,000 sec, bulb
Lens Magnification	1.5x or 2x with High SpeedCrop	1.5x	1.5x	1.5x	1.5x
Daily Rental price	\$150.00	\$125.00	\$90.00	\$75.00	\$75.00

* Burst rate varies with different manufacturers cards

Digital Cameras

	Fuji Digital SLR	Digital Point & Shoot		Digital Backs
	Fuji S3	Sony Mavica FD-7	Canon G3	Leaf C-MOST
Maximum Pixels	4256x2848	640x480	2272x1704	3150x2100
Megapixels	12	NA	4	6
File format	JPEG Fine or Normal or CCD RAW	JPEG	JPEG, Canon RAW	Leaf HDR file
Maximum file size (saved/opened)	25mb/34.7mb	60k / 900k	3.7mb / 11.1mb	na/ 36mg Leaf HDR
Power Source	(4) AA	Lithium ion Battery	Lithium ion Battery, AC	Computer
ISO Rating	100-1600	NA	50, 100, 200 400, Auto	100 only
Built-in output	Firewire & USB	none	USB	Firewire
Storage type card	CF I & II, microdrive & xD picture card	3 ½ floppy disk	Compact Flash I & II	Apple G4
External flash sync	Hot Shoe, PC Connection	NA	Built in Flash, PC connection	On required body/lens
Exposure controls	Auto, manual, shutter, aperture	Auto	Auto, manual, shutter, aperture	On required body/lens
Burst capture rate*	12 images @ 2.5 fps (JPEG) or 7 images @ 2.5 fps (RAW)	NA	2.5 fps in continuous mode	Body dependant
Lens size	Requires Nikon mount lenses	40-400mm fixed	35-140mm fixed	On required body
Memory included	1 GB memory card	3 ½" floppy disk	32 Mb CF	Computer hard drive dependant
Shutter speed range	30-1/4,000 sec, bulb	NA	15 secs - 1/2000 sec	On required body
	1.5x	na	na	na
Daily Rental price	\$90.00	\$15.00	\$40.00	\$100.00

* Burst rate varies with different manufacturers cards

DIGITAL ACCESSORIES

256 MB CF type 1	5.00
512 MB CF type 1	5.00
1 Gigabyte CF	10.00
1 Gigabyte SD	10.00
2 Gigabyte CF	15.00
4 Gigabyte CF	20.00
8 Gigabyte CF	30.00
Epson P2000 (portable storage device)	25.00
Mindstor 20 GB (portable storage device)	30.00
Delkin eFilm Picture Pad 30 GB (portable storage device)	30.00
Stratos Color Calibration Kit (for calibration of Digital SLR's)	2.00

Adapters/Readers

Parallel reader (Used for downloading of images through parallel port.)	5.00
USB reader (Mac or PC. For fastest download time through USB port.)	5.00
Lexar Firewire reader (Mac or PC. For fastest download time through 6P Firewire port.)	8.00
PCMCIA/SCSI 50 pin	10.00
Delkin DVD Burn Away (Portable DVD±RW/CD-RW burner & card reader.)	10.00
7 Port USB hub	5.00
4 Port Firewire Hub	5.00

Batteries

Extra batteries for Sony FD7	3.00
Nikon D1 series extra NiMH battery	5.00
Nikon D100 extra NiMH battery	3.00
Canon D60 extra battery	3.00
EOS 1D/1Ds extra battery	5.00
Quantum Turbo (For most Digital SLR cameras.)	15.00

Scanners

Nikon Coolscan IV (35mm only)	50.00
Nikon Coolscan 8000 (for film up to 6x9)	100.00

Computers

Dell Laptop PIII 1 GHZ (Includes built in CDRW, 512 MB Ram)	50.00
--	-------

Storage Devices

Iomega Zip 250 (USB)	10.00
Mindstor 20 GB (portable storage device)	30.00
Delkin eFilm Picture Pad 30 GB	30.00
CD burner (Mac only-firewire)	10.00
Maxstor 80 GB (firewire 6p)	10.00

Delkin DVD Burn Away	10.00
(Portable DVD±RW/CD-RW burner & card reader.)	

Cords

15' Firewire 6P to 6P	2.00
15' Firewire 4P to 6P	2.00
15' USB cord	2.00

Dye Sub Printer

Canon CD 300	25.00
Sony DR150 Dye Sublimation printer (See Special Event Package below.)	100.00

Digital Darkroom

Includes: Scanners, PC computer, Fuji 4000 Pictography printer, and CD burners \$30/HR
(Rental of Digital Darkroom includes usage of above listed equipment. Printing is charged on a per print basis. Call for prices.)

Special Event/Location Printing Package

Print Package includes the following items: Sony DR-150 Digital Printer, Dell Laptop PIII 1 GHz computer, Express Digital Darkroom Professional Edition Software v8.6, and a 7 port USB hub 100.00

(This printer package is for on site printing at events without having your customers wait for the lab.
The Sony DR-150 printer will print 4 X 6 prints at 8 seconds apiece or 5 X 7 prints at 15 seconds apiece. At these printing speeds you can keep up with the most demanding print orders right on location. This is a dye-sublimation print process so it has long lasting print stability and great color. Each print sizes requires the paper roll/ribbon to be changed out.)

Set up charge for custom borders and/or logos 50.00/HR
(Minimum 1 hour)

Media pricing subject to change. Please call to verify pricing.

Print material	1-100	101-249	250+
4x6 (550 prints per roll)	.70 each	.63 each	.56 each
5x7 (335 prints per roll)	1.18 each	1.06 each	.95 each
3x5 paper	\$587.38 for 1220 prints/ ribbon (special order - not returnable)		
6x8 paper	\$668.63 for 590 prints/ ribbon (special order - not returnable)		
Folders (4x6 or 5x7)	1-100	101-249	250+
Series 300 white	.46 each	.42 each	.37 each
Series 747 Wood grain	.68 each	.61 each	.54 each
Profile White Marble	.62 each	.56 each	.50 each

ULTRA-WIDE PANORAMIC CAMERAS

Hasselblad 903 SWC	35.00
6 x 6cm w/38mm F4.5 Biogon T* CF lens. Angle of view, 90 degrees diagonal, 72 degrees horizontal. Nearly symmetrical and distortion-free. Includes optical viewfinder.	
Brooks Veriwide	20.00
6 x 9cm w/47mm F8 Super Angulon lens. Uses 120 or 220 film. 90 degree diagonal angle of view.	
Polaroid back for Veriwide	10.00
Art Panorama 624	65.00
6 x 24cm w/120mm F8 Nikkor-SW lens. Makes 3 exposures on 120 film. Uses 120 film only. Angle of View: 92 degrees diagonal, 90 degrees horizontal. Includes built-in optical viewfinder, ND center spot filter and ground-glass.	
Hulcherama	100.00
Motorized 360 degree Spin Camera angle of view. Accepts Mamiya 645 Lenses (35mm, 45mm, 80mm, 150mm available.) Electronic rotation control provides effective shutter speeds of 2 sec. to 1/500 sec. Close focusing to 3 ft. with some lenses. Uses 120 or 220 film. Heavy duty tripod strongly recommended. Includes spare battery, charger and remote cable.	
Alpa 70 Rotocamera	75.00
Motorized 360 degree spin camera w/Rodenstock Grandagon 75mm F6.8 lens. Perspective correction. Electronic rotation control provides effective shutter speeds of 1/15-1/250 sec. Focus is fixed at infinity, so close-up limited by hyperfocal distance (3.7m at F32). Uses 220 or 70mm film. Heavy duty tripod strongly recommended. Includes charger and remote cable.	
Fuji GSW 690 III	25.00
6x9 cm w/65mm F5.6 Fujinon SW. Uses 120 or 220 film 4-8 exp on 120, 16 exp on 220. 76 degree angle of view.	
Fuji GX617	75.00
6x17mm panoramic camera that accepts interchangeable lenses. Uses 120 or 220 film. Matched viewfinder focusing 2m-inf. Makes 4 exposures on 120 film or 8 exposures on 220 film. Price includes one lens and ground glass for previewing composition.	
Fuji EBC Fujinon SW 90mm F5.6 lens	30.00
Interchangeable lens for the GX617. Lens hood, optical viewfinder, and center spot filter included. 77mm filter.	
Fuji EBC Fujinon SW 105mm F8 lens.	30.00
Interchangeable lens for the GX617. Lens hood, optical viewfinder, and center spot filter included. 77mm filter.	
Fuji EBC Fujinon SW 180mm F6.7 lens	30.00
Interchangeable lens for the GX617. Lens hood and optical viewfinder included. 77mm filter.	
Fuji EBC Fujinon 300mm F8 lens	35.00
Interchangeable lens for the GX617. Lens hood and optical viewfinder included. 67mm filter.	
Roundshot 35S	40.00

POLAROID

Cameras

Polaroid One-Step 600 flash	8.00
Polaroid 195	15.00
(114mm F3.8 normal Lens. Leaf shutter speeds B to 1/500. Uses pack film. Flash sync at all speeds.)	
Polaroid 600SE	20.00
(Leaf shutter speeds B to 1/500. Flash sync at all speeds. Uses pack film. Price includes one of the following lenses:)	
Polaroid 600SE 75mm F5.6 wide-angle lens	10.00
Polaroid 600SE 127mm F4.7 normal lens	10.00
Polaroid 600SE 150mm F5.6 short telephoto lens	10.00
O&ER Simulshot passport camera	25.00
(Two photos with built-in flash. Uses Pack Film.)	
Polaroid 454 miniportrait passport camera	30.00
(Four photos. Flash not included. Uses 4x5 film. Includes Polaroid 545 back.)	

Film Backs/Processors

Polaroid 545 back (for 4 x 5 cameras)	6.00
Polaroid 405 back (pack film adapter for 4x5 camera)	6.00

UNDERWATER CAMERAS

Nikonos V body w/one lens	15.00
(Choice of 28mm, 35mm, 80mm lens. Self-contained underwater and all-weather camera with aperture priority automation and manually selectable shutter speeds from 1/30 sec. to 1/1000 sec. TTL Flash Capacity. Waterproof to 160 feet.)	
15mm F2.8 underwater (w/DP II finder)	25.00
28mm F3.5 underwater	5.00
35mm F2.5 amphibious	5.00
80mm F4.0 amphibious	5.00
Nikonos SB101 underwater TTL flash	10.00
Nikonos SB105 underwater TTL flash	15.00
Nikonos close-up U.W. kit	5.00
Canon Sure Shot A1 panoramic (waterproof to 16ft)	10.00

STUDIO LIGHTING

Speedotron

Power Supplies

1205 CX power supply	30.00
2401A/B power supply	40.00

Lampheads

(Includes 7" or 11" reflector)

102 lamphead: 3200ws	15.00
105 quad-lamphead: 9600ws. (Fast flash duration for stopping quick motion.)	20.00
202 VF lamphead: 3200ws	15.00

Accessories

Reflector 7"/11"/16"	2.00
Snoot	2.00
20' head extension cable	2.00
Barndoor (7" or 11")	2.00
Grid (fits 7" reflector)	2.00

Norman

Power Supplies

600 SP Kit (Includes 600 ws Series 500 power supply, (3) LH 500 lampheads, (3) 9' stands and (3) umbrellas.)	50.00
800 Superlite power supply	20.00
P1212 power supply	30.00
PS2000 power supply	35.00
P2000 power supply	40.00
P2424 power supply	40.00
P4000 power supply	45.00

Lampheads

(Includes 5" or 10 " reflector)

LH500 lamphead: 600ws	15.00
LH2000 lamphead: 2400ws	15.00
LH2400 lamphead: 2400ws	15.00
LH2500 lamphead: 2500ws	15.00
LH4000 lamphead: 4000ws	20.00
Tri-Lite 900: 2000ws, focusing optical spot	20.00
FS6 fresnel lamphead: 2000ws	20.00

Accessories

AC slaves-screw in	10.00
Reflector 5"/10"	2.00
5X Reflector 20"	5.00
Snoot	2.00
20' Head extension cable	2.00
Barndoor 5"/10"	2.00
Grid 5"/10"	2.00
5" grid set (Includes: (1) holder, (3) grids.)	5.00

Broncolor

Flashman 950	30.00
Broncolor lamphead	15.00
19" soft reflector	5.00

Balcar

Monobloc II Monolight: 1000 ws (Includes 7" reflector. Stroboscopic up to 12 flashes per second.)	25.00
Universal lamphead: includes 7" reflector	15.00
Fiber Optic 3-light kit (Requires power supply & lamphead.)	15.00
Head extension cable	2.00

Photogenic

Photogenic 2 light kit (Includes: (2) umbrellas, (2) 9' stands, (2) 600ws monolights.)	50.00
Photogenic 3 light kit (Includes: (3) umbrellas, (3) 9' stands, (3) 600ws monolights.)	75.00
Photogenic Powerlight 600 monolight: 600ws	25.00
Photogenic Powerlight DR2500 monolight: 1000ws (with built in Pocket Wizard wireless receiver)	35.00
Photogenic softboxes: 25"x25"	5.00
Photogenic 16" reflector w/ diffusion	5.00
Photogenic 7" Diffusion	2.00
Photogenic 7" medium grid	2.00
Photogenic 7" fine grid	2.00
Photogenic small snoot	2.00
Photogenic large snoot	2.00

PORTABLE FLASH

On-Camera Flash

Vivitar 283/285	10.00
Nikon SB24/26	15.00
Nikon SB28	20.00
Nikon SB80DX (w/diffusion dome covers 14mm.) (D-TTL capacity w/ Nikon digital cameras.)	20.00
Nikon SB800 (w/diffusion dome covers 14mm.) (iTTL & D-TTL capacity w/ Nikon digital cameras.)	20.00
EOS 550 EX (w/diffuser covers 18mm) (E-TTL capacity w/ EOS digital cameras.)	20.00
EOS 580 EX (w/diffuser covers 18mm) (E-TTL II capacity with select EOS digital cameras)	20.00

Flash Accessories

Nikon AS-10 (connects 3 TTL flashes together.)	3.00
Nikon SC-17 off camera cord	3.00
Nikon SC-18 connecting cord	3.00
Nikon SC-28 off camera cord	3.00
Canon off-camera shoe cord 2	5.00

Norman

Power Supplies/Lampheads

400B w/head w/5' or 20' cable	25.00
Additional head w/5' or 20' cable	5.00

Accessories

Spare battery for 400B (set of two)	5.00
2DRP diffusion reflector (130 degree)	2.00
2H telephoto reflector (15 degrees, F16 at 100' w/100 ISO film.)	2.00
Y-cable	2.00
Stand adapter	1.00
20' extension cable	2.00
Camera bracket	2.00
External charging cable	1.00
Dual charging cable	1.00

Sunpak

Sunpak 522/544 w/Quantum battery II	25.00
Sunpak 555 w/Quantum battery II	25.00

Quantum

QFX2D flash w/400B battery (Will work in TTL mode with film & digital cameras)	30.00
QFT2D flash w/ turbo battery (Will work in TTL mode with film & digital cameras)	25.00
Q flash only (no battery)	20.00
QF TTL & QTTL cords	2.00
Quantum Turbo battery (½ price w/rental of flash)	15.00
Quantum Turbo 2x2 (½ price w/rental of flash)	15.00
Quantum battery II (½ price w/rental of flash)	10.00
Quantum battery I (½ price w/rental of flash)	10.00
Quantum Turbo Z (½ price w/rental of flash)	15.00
Quantum Battery cords (w/out battery)	2.00
Quantum Q Flash Quick release bracket	2.00

TUNGSTEN LIGHTING

Lowel Tota kit (Includes: (2) 600w Omni lights, (2) 1000w Tota lights, (4) stands, (2) umbrellas, scrims, barndoors, and case.)	60.00
Smith Victor K50 kit (Includes: (3) 600w lights, stands, barndoors, (2) scrims and case.)	30.00
Smith Victor K2R kit (Includes: (3) 600w lights, (3) stands, and case.)	20.00
Arri Kit (Includes: (2) 300w lights, (2) 600w lights, focusing fresnels, stands, barndoors and scrims.)	75.00
Colortran light 1000w	15.00
Colortran light 650w	10.00
Lowel Tota light 1000w	15.00
Lowel Omni light 650 w	10.00
Smith Victor #740 650w (w/barndoor)	10.00
Smith Victor 500w photo floods	5.00

METERS

Broncolor FCC color meter	15.00
(Measures color temp of ambient and flash tubes and flash duration speed. Flash or ambient.)	
Gossen Luna Pro F	6.00
Gossen Luna Pro Digital F	8.00
Gossen Luna Star F	6.00
Gossen Ultra Pro	10.00
Gossen Starlite	15.00
(1-5 degree spot meter. Flash and ambient.)	
Minolta Meter IV	15.00
Minolta Color Meter II	15.00
Pentax Digital Spotmeter V	15.00
Sekonic 308	6.00
Sekonic L328	10.00

CAMERA SYNCS/ TRIPPERS

Photo Slaves

Peanut slave	2.00
Super slave	5.00

Radio Slave

Pocket Wizard Plus II transceiver	15.00
Quantum Freewire	10.00
(Wireless transmitter and receiver all in one.)	
Quantum radio slave 4i	15.00
(Transmitter, receiver and cords. All frequencies rated "B".)	
Add'l receiver for Quantum radio slave	5.00
(Frequency "B")	

Beam/Sound Trippers

Pocket Wizard wave sensor	25.00
(Light and sound triggering device for split second timing.)	
Nikon cord for wave sensor	5.00
Wein sound tripper	5.00
(Trips flash via adjustable sound sensor.)	

Infra-Red Slaves

Nikon ML-2	20.00
(For use w/Nikon motor drives. Requires motor drive. Maximum working distance 300ft. 3 channels available.)	

Cable Releases

20' bulb release	3.00
12" - 24" cable release	1.00

GRIP EQUIPMENT

Stands

9' stands	2.00
11' stands	3.00
13' stands	4.00
19 1/2' Super Hi overhead roller stands	10.00
26' Super Hi overhead stands	15.00
C-stands	4.00
C-stands w/40" extension arm and grip head	5.00
Backlight stands	2.00
3' Avenger backlight stands	2.00
1 1/8" to 5/8" pin	1.00
Stand adapters	1.00

Overhead Silk

12'x12' overhead silk kit	50.00
(12'x12' frame, 12'x12' silk, (2) 19 1/2' stands.)	

Booms

Bogen Superboom	15.00
Bogen boom (requires light stand)	5.00

Clamps/Flags

A-clamps: small	.25
medium	.50
large	.75
Alligator clamps	.50
Reflectasol clamp	.50
Bogen Super clamp w/ camera mount	2.00
Bogen Magic Arm	5.00
(multi-angle ballhead/camera holder)	
Articulated arm	3.00
14"x 8" solid w/ flexible arm	2.00

AC Extension Cords

15 foot	1.00
30 foot	2.00
50 foot	3.00
100 foot	4.00
Power strip	3.00
(6 grounded outlets on 1 strip.)	

AUDIO/ VISUAL

Projectors

Overhead projector	15.00
Opaque projector	20.00
Epson LCD Projector (1200 Lumens)	100.00

Slide Projectors

Kodak 760H slide projector	15.00
Kodak 850H slide projector	20.00
Kodak Ektagraphic AF-2	20.00
Ektagraphic IIIA (w/4"-6" zoom lens)	20.00
Ektagraphic 5600 (w/4"-6" zoom lens)	20.00
Bell & Howell Ringmaster 799 cassette slide projector (w/built-in screen)	20.00
Singer Caramate cassette slide projector (w/built-in screen)	15.00

Audio Visual Accessories

Sharp cassette recorder w/slide sync system	20.00
Kodak 4"x6" zoom projection lens	5.00
Navitar 2" lens F2.8 (wide angle)	8.00
Stack loader	2.00
Piggyback (for stacking projectors)	3.00
Slide carousel (80 slide capacity)	1.00
25' remote extension cord for slide projectors	2.00
50' remote extension cord for slide projectors	3.00
AV cart.	10.00
Laser pointer.	5.00
Flip chart holder (w/o paper)	5.00
Dry Erase Board.	call

Dissolve Units

Micro Diamond slide dissolve unit	20.00
Tiffen dissolve w/cassette	25.00

8mm/16mm Movie Projectors

8mm/S8 movie projector	20.00
16mm movie projector	20.00

8mm Editors/Splicers

Craig super 8mm editor/splicer	10.00
Universal 8mm/S8 splicer	5.00

Projection Screens

40"x40" screen (3x3)	5.00
50"x50" screen (4x4)	7.00
60"x60" screen (5x5)	8.00
70"x70" screen (6x6)	10.00
78"x44" screen (16:9 ratio optimized for LCD projectors)	10.00
84"x84" screen (7x7)	15.00
96"x96" screen (8x8)	20.00

Light Tables

Acculight viewing table 15"x24":5000 degree K.	10.00
Light table 2'x3'	20.00

VIDEO

Camcorders (3 day week)

VHS camcorder	40.00
Super VHS camcorder	50.00
Panasonic AG195 VHS camcorder	40.00
Panasonic AG460 S-VHS camcorder (2 chip)	75.00
VHS-C camcorder	35.00
8mm camcorder	35.00
HI-8 camcorder	50.00
Sony Digital 8 camcorder	60.00
Digital Sony TRV19 mini DV	50.00
Digital Sony TRV8 mini DV	75.00
Digital Sony DVD101 mini DVD	75.00

Camcorder Accessories

Camcorder extra battery	3.00
Cigarette lighter adapter for camcorders	3.00
Video tripod	8.00
Bogen fluid head tripod	15.00
ITE heavy-weight fluid head tripod	25.00
2x Teleconverter for video cameras	5.00
Video camera battery charger	5.00
VHS-C to VHS adapter	2.00

Digital Video Equipment

Sony Digital 8 Camcorder	50.00
Digital Sony TRV8 mini DV	75.00
Digital Sony DVD101 mini DVD	75.00
Epson LCD Projector	100.00
Dazzle Hollywood DV-Bridge	15.00
(Converts analog video & sound to DV via Firewire.)	
Maxtor 80 GB hard drive (6P Firewire)	10.00
HP DVD Writer (6P Firewire)	50.00
(+R & +RW format)	
15' Firewire cord 6P-6P	2.00
15' Firewire cord 4P-6P	2.00
6' Firewire cord 6P-6P	1.00
6' Firewire cord 4P-6P	1.00
DVI to VGA cable	5.00
USB Video Bus	10.00
(Computer video editor. Uses video signal only. CD, instructions included.)	

Microphones

Azden wireless mic	15.00
(2 frequencies)	
External hand-held mic w/16' cord	5.00
Zoom mic	10.00

VCR'S & DVD Players

Multi format VCR	30.00
(PAL, NTSC, SECAM)	
Dual Deck VCR	25.00
Super VHS VCR	25.00
Panasonic AG 7350 S-VHS	50.00
VCR w/auto repeat	20.00
VCR (4 head)	15.00
Coby Multi Format DVD player	10.00
Delkin DVD Burn Away	10.00
(Portable DVD±RW/CD-RW burner & card reader.)	
9" monitor/VCR	10.00
(AC/DC cig. adapter and harness for auto use.)	
13" monitor/VCR	30.00
19" monitor/VCR	40.00

Monitors

13" color monitor	10.00
19" color monitor	20.00
26" color monitor	30.00

Video Special Equipment

Elmo S8 or R8 transfer projectors	150.00
(8mm movie film to video transfer unit.)	
Elmo 35G	100.00
(Slide to video transfer unit.)	
Sima video edit	10.00
(audio and video editor.)	
Fotovix	25.00
(slide to video transfer unit.)	
Character generator/titler	25.00

SPECIAL EQUIPMENT

Ice cubes	2.00/each
Set of 20 ice cubes	20.00
Enlarging lenses	call
Rosco fog machine	35.00
(1/4 liter fog juice included in price of rental. Add'l fog juice is \$7.50 per 1/4 liter.)	
Posing Stool	5.00

Copy Equipment

Small copy stand	10.00
Bencher copy stand w/lights	30.00/HR
(In house use only.)	
Chroma Pro slide duplicator (Nikon mount)	25.00

Filters

(Polarizer, 81A, CC30M, FLD, FLB, Red, Yellow, Star, Diffusion)	
49mm-58mm	1.00
62mm-77mm	2.00
49-58mm circular polarizer	2.00
(for AF lenses)	
62-77mm circular polarizer	3.00
(for AF lenses)	

Communications

Walkie-talkies	10.00
(set of two, range of up to 2 mile.)	

Cases

We carry a large selection of cases for shipping your equipment call

IN ADDITION TO RENTAL, CAMREN SELLS PHOTOGRAPHIC EQUIPMENT AND SUPPLIES. CAMREN IS A DEALER FOR THE FOLLOWING COMPANIES:

A

Art Panoramic Panoramic cameras.
Avenger Studio grip equipment.

B

Bogen Tripod, studio accessories.
Brandess/Kalt Miscellaneous equipment supplies.
Bronica Cameras.

C

Canon Cameras, lenses, flash, accessories.
Chimera Lightboxes, accessories.

D

Davis & Sanford . . Tripods, tripod heads, support systems.
Denny Manufacturing Backdrops, props, studio accessories.

E

Elinchrome Flash, Prolinca lighting.

F

Fuji Film, cameras, accessories.

G

Gossen Light meters.

H

Hulcher Co Panoramic cameras.
Holga Cameras

I

Ilford Film, paper.

K

Kodak Film, paper, chemistry.

L

Lightware Cases.

M

Mamiya Cameras, lenses.

N

Norman Lighting, accessories.
NPC Ballheads, Polaroid backs.

P

Plume Lightboxes, accessories.
Pocket Wizard Radio Remotes.
Polaris & Shepherd Flash, exposure meters.
Polaroid Film, cameras, accessories.

Q

Quantum Batteries radio slaves, meters, accessories.

R

Rotatrim Precision rotary cutters.
Roundshot Panoramic cameras.

S

Sekonic meters.
Speedotron Lighting equipment.
Superior Specialties Backdrop paper, backdrops,
and studio accessories.

T

Tamron Lenses, accessories.

W

Wein Cordless remote controls, Weincell batteries.

CAMREN PHOTOGRAPHIC RESOURCES

1340 W Byers Pl
Denver, CO 80223
303-698-1797

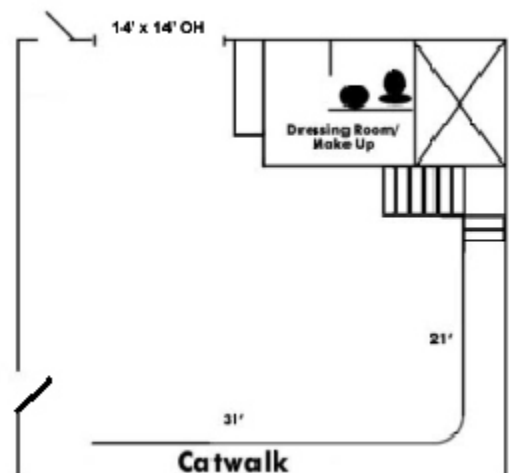
-STUDIO C	\$30/HR - \$200/DAY
-B&W DARKROOM (for printing)	\$10/HR - \$150/MONTH
-COPY ROOM	\$30/HR
-VIDEO TRANSFER ROOM (for movies, prints & slides to video)	\$30/HR
-DIGITAL DARKROOM	\$30/HR

FEATURES OF CAMREN RENTAL STUDIO

- 17' high ceiling, 14'x14' overhead garage door.
- Private security door to rear parking area. Personal security code allows access only to those with code.
- Monitored security system with activation via personal security code.
- Refrigerator
- 24 hour a day, 7 day a week secured access.
- Private phone. Fax service available during business hours.
- Access to showroom during business hours.

STUDIO C

- Dressing/make-up room with dressing area and 3 make-up areas.
- Private bathroom.
- Conference table.
- Heavy-duty 30 amp wiring for power intensive jobs.
- 2 wall cyclorama 13' high, 21'x31' w/5' coved radius. (Painting is not included in price. Customer is responsible for cyc painting.)
- Catwalk with 30 amp power.
- Lighting package available at no extra charge with rental of studio, includes:
Speedotron 2401A power pack, (3) 102 lampheads, (3) stands, and (3) umbrellas.



To see photos of the studio, just check out our website at
<http://www.camren.com/facility/studioc.html>

GENERAL TERMS AND CONDITIONS

- 1. ACCEPTANCE.** I, Lessee, agree to the terms and conditions on both sides of this agreement in consideration for the rental usage of the equipment, and any purchase, if applicable. I agree to the payment of all charges, fees, repair costs, and penalty fees.
- 2. RESERVATIONS/CANCELLATIONS.** Reservations for equipment can be made over the phone and are recommended, as many items are one of a kind. Confirmed reservations are subject to a cancellation fee of 100% of the full rental rate and penalty fees, if applicable.
- 3. RENTAL CHARGES.** The minimum rental charge is a one day charge. A rental day is a 24 hour period from time the equipment leaves Lessor. Equipment picked up on a Friday and returned within 72 hours will be charged a one day rental rate. The weekly rate is four times the daily rate. The monthly rate is twelve times the daily rate. Payment is due upon equipment return. Rental charges will continue during absence of equipment due to loss or damage. Any facility overtime charges involving an employee remaining on premises beyond normal business hours will apply in ½ hour increments with a minimum of ½ hour. Overtime is subject to availability and should be scheduled in advance. All prices and specifications are subject to change without notice. **Rental charges will be assessed whether the equipment is used or not. Rental charges are for time out not time used!**
- 4. LATE RETURNS.** Time is the essence of this agreement. Equipment not returned on time will be subject to additional rental charges which shall be a minimum of one additional rental day. Penalty fees will be assessed at Lessor's discretion.
- 5. DEPOSITS.** A deposit is required on all rentals. The deposit shall be in the form of one of the following: a) check, b) Visa, MasterCard, or American Express, c) cash retail value. The deposit may be held pending repair or replacement of rental equipment. Rental charges will continue during absence of equipment due to loss or damage. Proof of insurance coverage acceptable to Lessor may be required on some rentals. Lessee, by giving lessor deposit, authorizes the Lessor to use deposit for payment of rental charges, repair, replacement, services, goods, penalty fees, and/or any other payment owed Lessor by Lessee.
- 6. LOSS, THEFT, OR DAMAGE.** The Lessee assumes entire risk of loss or damage to equipment during rental. Any damage to or loss of equipment must be paid in full to Lessor on demand. Title to equipment and the right to, at any time, terminate lease and recover possession, if not returned on demand, remains with Lessor. All charges, including attorney's fees incurred in recovering equipment not returned on demand, remain with Lessee. A non-refundable 10% damage/loss fee, based on the total rental charge, is available for Lessee to purchase from Lessor. If Lessee elects to accept the 10% damage/loss fee Lessee agrees that they are liable for the first \$500.00 of damage or loss of equipment. Lessee will be held harmless for damage or loss exceeding \$500.00 unless such damage or loss:
- a. is caused by intentional, willful, negligent, or careless actions or inaction by Lessee or any other person while equipment is rented to Lessee;
 - b. is due to rain or other moisture;
 - c. is due to scratching of lens;
 - d. is due to internal adjustments or repairs by unauthorized persons;
 - e. occurs during shipping or transportation by common carrier;
 - f. is due to unexplained loss or disappearance;
 - g. occurs by theft from an unlocked or visually open vehicle;
 - h. occurs by theft unreported to local police within 48 hours of the theft;
 - i. occurs outside of the 48 continental United States;
 - j. is caused by or results from warlike actions of Lessee or others (including any government) including loss due to seizure or confiscation.
- 7. MALFUNCTIONS.** Equipment is rigorously tested before being offered for rental. Nevertheless we strongly suggest the Lessee check out the equipment before accepting it. Our program of maintenance and inspection prevents most problems, but it is not possible even with the most meticulous inspection to duplicate all the conditions found in the field, nor is it possible to predict all failures. Lessor must be notified of any and all problems immediately. Failure to do so can result in a full rental charge.
- 8. SPARE BULB/INSTRUCTION BOOK POLICY.** Equipment rental price includes bulbs. Spare bulbs are provided on request. There is no charge for the use of spare bulbs providing burned out bulbs are returned. A charge will be made for missing bulbs, broken bulbs or excessive burnouts. Instruction books will be supplied on request. Instruction books not returned will be charged for.
- 9. EXCLUSION OF WARRANTIES OF MERCHANTABILITY AND WARRANTIES OF FITNESS. LIMITATION OF LESSOR'S LIABILITY.** Lessee warrants that Lessee or Lessee's agent is trained and can utilize equipment. Lessee agrees that Lessor shall not be responsible for Lessee's inability to utilize rented equipment for any reason including insufficient knowledge of the equipment. In the event Lessee is unable to utilize the equipment due to Lessee's insufficient training or knowledge, or for any other reason, Lessee agrees to hold Lessor harmless from any damage or loss from the failure or inability to use the equipment. Lessee agrees that Lessor has no duty to instruct or train Lessee in the use of equipment, and that any information regarding the equipment is given as a courtesy and is not part of the rental agreement. Lessor reserves the right to refuse rental to any person, company or organization for any reason.
- 10. INDEMNITY.** Lessee agrees to hold Lessor harmless and indemnify Lessor in the event of theft, injury, or other loss or damage arising from usage of Lessor's facilities or equipment. Lessee assumes all liability for any and all damage or loss whatsoever, and/or injury incurred, either directly or indirectly to his invitee, agent or employee as a result of using Lessor's facilities or equipment, and for personal property of lessee, invitee, or employee. Equipment is used at customer's sole risk. Lessor shall not be liable beyond the amount of any rental fees for any injury, loss, or damage suffered by customer, directly, indirectly, or consequentially, as a result of mechanical failure, casualty, unavailability of equipment, or otherwise.
- 11. OUT OF TOWN RENTALS.** Minimum billing for out of town rentals is four days when equipment is shipped. The four day billing covers a full seven day rental period. Equipment is to be returned via a prepaid method. Any shipping charges billed to Lessor will be re-billed with a handling charge. Lessor is not responsible for delays caused by carriers. The Lessee is responsible for all rental charges in the event of a delay by the carrier. All equipment is tested before shipping. In the event of a malfunction, the lessee is still responsible for rental, shipping and/or repair charges. Lessor must be notified of any and all problems immediately. Failure to do so can result in a full rental charge.
- 12. FACILITIES.** Studios are rented on an as is basis. Painting coves or floors is the responsibility of the lessee. Painting may be done by Lessee at N/C subject to availability. Paint spraying is not allowed. Lessor can supply painting labor and materials for an additional cost. Call for prices. Lessor's agent shall have the right to enter the rental area and take possession thereof at any time. Premises shall not be used for unlawful acts. No hazardous substances or materials shall be brought on the premises without written permission from Lessor.
- 13. REMEDIES.** Lessee agrees to reimburse Lessor for all costs and expenses of collection of any amounts owed under this, or any other agreement Lessee has entered into with Lessor, including, but not limited to, reasonable attorney's fees, penalty fees, and continuing rental and late charges at 1.75% per month.