



## 2017 RENTAL CATALOG

1340 W. BYERS PL.  
DENVER, CO. 80223  
**(303) 698-1797**  
FAX (303) 698-1799  
e-mail: [info@camren.com](mailto:info@camren.com)  
[www.camren.com](http://www.camren.com)

Hours: Monday-Friday 8am-5:30pm

Effective 01/31/17

This page left blank intentionally.

# TABLE OF CONTENTS

## DIGITAL & 35MM SLR SYSTEMS

|                            |     |
|----------------------------|-----|
| Nikon .....                | 4-5 |
| Canon .....                | 5-6 |
| 35mm Point and Shoot ..... | 6   |

## DIGITAL CAMERA DETAILS .....

## DIGITAL ACCESSORIES .....

## MEDIUM FORMAT

|                              |    |
|------------------------------|----|
| Hasselblad .....             | 12 |
| Mamiya 645 .....             | 12 |
| Mamiya 7II Rangefinder ..... | 13 |
| Mamiya RB/RZ67 .....         | 13 |
| Pentax 6x7 .....             | 13 |

## LARGE FORMAT

|                          |    |
|--------------------------|----|
| 4x5 Cameras .....        | 14 |
| View Camera Lenses ..... | 14 |

## ULTRA-WIDE PANORAMIC CAMERAS .....

## POLAROID .....

## UNDERWATER CAMERAS .....

## STUDIO FLASH

|                  |    |
|------------------|----|
| Speedotron ..... | 16 |
| Norman .....     | 16 |
| Photogenic. .... | 16 |
| Profoto. ....    | 16 |
| Balcar .....     | 17 |

## PORTABLE FLASH

|                       |    |
|-----------------------|----|
| On-Camera Flash ..... | 17 |
| Norman .....          | 17 |
| Profoto. ....         | 18 |
| Sunpak .....          | 18 |
| Quantum .....         | 18 |

## TUNGSTEN LIGHTING .....

## METERS .....

## CAMERA SYNCs/TRIPPERS .....

## GRIP EQUIPMENT .....

## CAMERA SUPPORT .....

## SOFTBOXES UMBRELLAS .....

## AUDIO/VISUAL EQUIPMENT .....

## VIDEO EQUIPMENT .....

## SPECIAL EQUIPMENT .....

## DEALER LIST .....

## FACILITIES RENTAL INFORMATION .....

## BACKGROUNDS .....

See our web page at <http://www.camren.com/camera/background.html>

Rental rates shown are for a single 24 hour period. Weekly rates are four times the daily rate.

# DIGITAL & 35MM

## NIKON

### DIGITAL BODIES

(See chart on page 8 for camera details)

#### Megapixels & Format

|       |         |        |
|-------|---------|--------|
| D4    | 16mp FX | 200.00 |
| D800E | 36mp FX | 150.00 |
| D750  | 24mp FX | 100.00 |
| D700  | 12mp FX | 100.00 |
| D600  | 24mp FX | 100.00 |
| D300  | 12mp DX | 90.00  |
| D7000 | 16mp DX | 75.00  |

### FILM BODIES

|         |       |
|---------|-------|
| FE2/FM2 | 15.00 |
| F2-AS   | 20.00 |

### LENSES

#### Wide-angle Lenses

|                                                                     |              |       |
|---------------------------------------------------------------------|--------------|-------|
| 8mm F3.5 AF circular (Sigma)                                        | drop-in-gel  | 25.00 |
| 10.5mm F2.8G ED AF DX                                               | drop-in gel  | 30.00 |
| (Use w/ APS-C camera sensors. Will vignette on full frame cameras). |              |       |
| 14mm F2.8 AF rectilinear (Tamron)                                   | drop-in gel  | 25.00 |
| 16mm F2.8 AF full frame fisheye                                     | rear bayonet | 25.00 |
| 18mm F2.8 AF D                                                      | 77mm         | 25.00 |
| 20mm F2.8 AF D                                                      | 62mm         | 15.00 |
| 24mm F2.8 AF                                                        | 52mm         | 10.00 |
| 24mm F1.4 DG HSM Art (sigma)                                        | 77mm         | 25.00 |
| 24mm F3.5 D ED PC-E tilt/shift                                      | 77mm         | 30.00 |
| 28mm F2.8 AF                                                        | 52mm         | 10.00 |
| 30mm F1.4 DC HSM (Sigma)                                            | 62mm         | 15.00 |
| (Use w/ APS-C camera sensors. Will vignette on full frame cameras)  |              |       |
| 35mm F2.0 AF D                                                      | 52mm         | 15.00 |
| 35mm F1.4G AF-S                                                     | 67mm         | 35.00 |
| 35mm F1.8G DX AF-S                                                  | 52mm         | 15.00 |
| (Use w/ APS-C camera sensors. Will vignette on full frame cameras)  |              |       |

#### Normal Lenses

|                 |      |       |
|-----------------|------|-------|
| 50mm F1.4 AF    | 52mm | 15.00 |
| 50mm F1.4G AF-S | 58mm | 15.00 |

#### Telephoto Lenses

|                           |              |        |
|---------------------------|--------------|--------|
| 85mm F1.4G AF-S           | 77mm         | 30.00  |
| 85mm F1.8 AF              | 62mm         | 15.00  |
| 85mm F1.8G AF-S           | 67mm         | 15.00  |
| 105mm F2.8G AF-S VR micro | 62mm         | 25.00  |
| 105mm F2.8 AF micro       | 62mm         | 20.00  |
| 180mm F2.8 AF ED-IF       | 72mm         | 20.00  |
| 300mm F2.8 D ED-IF AF-S   | drop-in 52mm | 50.00  |
| 300mm F2.8 ED-IF AF-D     | drop-in 39mm | 35.00  |
| 300mm F4 AF-S             | 77mm         | 20.00  |
| 400mm F2.8 D ED-IF AF-S   | drop-in 52mm | 75.00  |
| 500mm F4.0 D ED-IF AF-S   | drop-in 52mm | 60.00  |
| 500mm F8.0 mirror         | rear 39mm    | 20.00  |
| 600mm F4.0 D ED-IF AF-S   | drop-in 52mm | 100.00 |

### Macro Lenses

|                           |      |       |
|---------------------------|------|-------|
| 60mm F2.8 AF micro        | 62mm | 20.00 |
| 105mm F2.8 AF micro       | 52mm | 20.00 |
| 105mm F2.8G AF-S VR micro | 62mm | 25.00 |

### Zoom Lenses

|                                                                     |      |       |
|---------------------------------------------------------------------|------|-------|
| 10-24mm F3.5-4.5 Di-II LD (IF) (Tamron)                             | 77mm | 25.00 |
| (Use w/ APS-C camera sensors. Will vignette on full frame cameras). |      |       |
| 12-24mm F4G ED-IF AF-S DX                                           | 77mm | 30.00 |
| (Use w/ APS-C camera sensors. Will vignette on full frame cameras). |      |       |
| 14-24mm F2.8G ED AF-S                                               | none | 30.00 |
| 17-55mm F2.8G ED-IF AF-S DX                                         | 77mm | 30.00 |
| (Use w/ APS-C camera sensors. Will vignette on full frame cameras). |      |       |
| 17-35mm F2.8 ED-IF AF-S D                                           | 77mm | 25.00 |
| 18-35mm F1.8 DC HSM (Sigma)                                         | 72mm | 20.00 |
| (Use w/ APS-C camera sensors. Will vignette on full frame cameras). |      |       |
| 18-140 F3.5-5.6G ED VR AF-S DX                                      | 67mm | 15.00 |
| (Use w/ APS-C camera sensors. Will vignette on full frame cameras). |      |       |
| 18-270 F3.5-6.3 AF Di-II VC LD (Tamron)                             | 72mm | 20.00 |
| (Use w/ APS-C camera sensors. Will vignette on full frame cameras). |      |       |
| 20-35mm F2.8 AF-D                                                   | 77mm | 20.00 |
| 24-70mm F2.8E ED AF-S VR                                            | 82mm | 35.00 |
| 24-70mm F2.8G ED AF-S                                               | 77mm | 30.00 |
| 24-85mm F3.5-4.5G ED VR                                             | 72mm | 15.00 |
| 24-85mm F2.8-4 AF D                                                 | 72mm | 20.00 |
| 24-120mm F3.5-5.6 AF-D                                              | 72mm | 20.00 |
| 24-120mm F3.5-5.6G ED-IF AF-S VR                                    | 72mm | 25.00 |
| 28-70mm F3.5-4.5 AF (Tamron)                                        | 52mm | 10.00 |
| 28-70mm F2.8 AF D (Sigma)                                           | 77mm | 20.00 |
| 28-75mm F2.8 AF Di LD (IF) (Tamron)                                 | 67mm | 20.00 |
| 28-85mm F3.5-4.5 AF                                                 | 62mm | 15.00 |
| 28-105mm F2.8 AF LD (IF) (Tamron)                                   | 82mm | 25.00 |
| 35-70mm F3.3-4.5 AF                                                 | 52mm | 10.00 |
| 35-90mm F4-5.6 AF (Tamron)                                          | 55mm | 10.00 |
| 35-105mm F3.5-4.5                                                   | 52mm | 10.00 |
| 35-105mm F3.5-4.5 AF D                                              | 52mm | 10.00 |
| 70-200mm F2.8G ED-IF AF-S VR                                        | 77mm | 40.00 |
| 70-200mm F2.8G ED-IF AF-S VR II                                     | 77mm | 50.00 |
| 70-210mm F4-5.6 AF-D                                                | 62mm | 15.00 |
| 70-210mm F4.5-5.6 AF (Tamron)                                       | 52mm | 15.00 |
| 70-300mm F4-5.6 AF Di LD (Tamron)                                   | 58mm | 15.00 |
| 80-200mm F2.8 D ED-IF AF-S                                          | 77mm | 30.00 |
| 80-200mm F2.8 ED-IF AF-D                                            | 77mm | 25.00 |
| 80-400mm F4.5-5.6G ED VR AF-S                                       | 77mm | 35.00 |
| 200-400mm F5.6 AF LD (IF) (Tamron)                                  | 77mm | 25.00 |

### DX Digital Lenses

(For use primarily with digital SLR's with DX, or 24mm, sensor sized cameras. These lenses will vignette on 35mm SLR at the wider focal lengths.)

|                                         |             |       |
|-----------------------------------------|-------------|-------|
| 10.5mm F2.8G ED AF DX fisheye           | drop-in gel | 30.00 |
| 30mm F1.4 DC HSM (Sigma)                | 62mm        | 15.00 |
| 35mm F1.8G DX AF-S                      | 52mm        | 15.00 |
| 18-140 F3.5-5.6G ED VR AF-S DX          | 67mm        | 15.00 |
| 10-24mm F3.5-4.5 Di-II LD (IF) (Tamron) | 77mm        | 25.00 |
| 12-24mm F4.0G ED-IF AF-S DX             | 77mm        | 30.00 |
| 17-55mm F2.8G ED-IF AF-S DX             | 77mm        | 30.00 |
| 18-35mm F1.8 DC HSM (Sigma)             | 72mm        | 30.00 |
| 18-270 F3.5-6.3 AF Di-II VC LD (Tamron) | 72mm        | 20.00 |

**Motor Drives**

|                                        |       |
|----------------------------------------|-------|
| MD-12 motor for FE/FM series . . . . . | 5.00  |
| MD-4 motor for F3 . . . . .            | 10.00 |

**Accessories**

|                                                                         |       |
|-------------------------------------------------------------------------|-------|
| MC-12A (2-pin remote release) . . . . .                                 | 2.00  |
| MC-25 (2-pin to 10-pin adapter for remote accessories) . . . . .        | 1.00  |
| MC-30 (10 pin remote release.) . . . . .                                | 3.00  |
| MC-36 (10 pin timer remote control) . . . . .                           | 5.00  |
| Extension tubes: 11mm, 18mm, or 36mm . . . . .                          | 2.00  |
| TC 14-E . . . . .                                                       | 10.00 |
| TC 17-E II . . . . .                                                    | 10.00 |
| TC 20-E . . . . .                                                       | 10.00 |
| TC 20-E II . . . . .                                                    | 10.00 |
| 1.4X AF teleconverter (Tamron) . . . . .                                | 8.00  |
| (Will not auto-focus w/AF-S lenses.)                                    |       |
| 2X AF teleconverter (Tamron) . . . . .                                  | 8.00  |
| (Will not auto-focus w/AF-S lenses.)                                    |       |
| Bellows. . . . .                                                        | 10.00 |
| NPC Polaroid back for F3/FE/FM//N90 . . . . .                           | 15.00 |
| (P-back is 1/2 price w/rental of compatible body.)                      |       |
| Nikon ML-L3 wireless remote . . . . .                                   | 3.00  |
| (Works w/ D7000, D600, D90, etc. Not compatible w/ D300, D700, D4, etc) |       |

**Flashes**

|                                                           |       |
|-----------------------------------------------------------|-------|
| Nikon SB800 (w/diffusion dome covers 14mm.) . . . . .     | 20.00 |
| (iTTL & D-TTL capacity w/ Nikon digital cameras.)         |       |
| Nikon SB900 (w/diffusion dome covers 14mm.) . . . . .     | 20.00 |
| (iTTL capacity w/ Nikon digital cameras.)                 |       |
| Nikon SB910 (w/diffusion dome covers 14mm.) . . . . .     | 20.00 |
| (iTTL capacity w/ Nikon digital cameras.)                 |       |
| Nikon SD-800 5 <sup>th</sup> Battery for SB-800 . . . . . | 1.00  |
| (No charge with SB-800 rental)                            |       |
| Nikon Speed-light Accessory plate (AS-19) . . . . .       | 1.00  |
| (No charge with SB-800 rental)                            |       |
| Nikon SC-17 off camera cord . . . . .                     | 3.00  |
| Nikon SC-18 connecting cord . . . . .                     | 3.00  |
| Nikon SC-28 off camera cord . . . . .                     | 3.00  |
| Nikon SC-29 off camera cord . . . . .                     | 3.00  |
| Nikon AS-10 . . . . .                                     | 3.00  |
| (Connects 3 TTL flashes together.)                        |       |

**Batteries**

|                                                    |      |
|----------------------------------------------------|------|
| Nikon EnE115 battery (D800/ D600/ D7000) . . . . . | 5.00 |
| Nikon EnE14 battery (D3 series) . . . . .          | 5.00 |
| Nikon EnE13e battery (D700/ D300/ D90) . . . . .   | 5.00 |

**CANON EOS****DIGITAL BODIES**

(See chart on page 7 for camera details)

Megapixels

|                             |       |        |
|-----------------------------|-------|--------|
| EOS 5DS R . . . . .         | 50mp* | 175.00 |
| EOS 5D Mk IV . . . . .      | 30mp* | 150.00 |
| EOS 5D Mk III . . . . .     | 22mp* | 150.00 |
| EOS 6D . . . . .            | 20mp* | 100.00 |
| EOS 7DII . . . . .          | 20mp  | 100.00 |
| EOS Rebel T2i kit . . . . . | 18mp  | 50.00  |

w/18-135mm F3.5-5.6 IS EF-S lens

(\* denotes a full frame sensor)

(When shooting 1080p video on a DSLR, one gigabyte will hold about 2½ minutes. Cards used to record video should be Class 6 or faster)

**FILM BODIES**

|                    |       |
|--------------------|-------|
| EOS-1/1N . . . . . | 30.00 |
| Elan IIE . . . . . | 15.00 |

**LENSES****Wide-Angle Lenses**

|                                                |             |       |
|------------------------------------------------|-------------|-------|
| 8mm F3.5 circular (Sigma) . . . . .            | drop-in-gel | 25.00 |
| 14mm F2.8 rectilinear (Tamron) . . . . .       | drop-in-gel | 25.00 |
| 17mm F4L tilt/shift (manual focus). . . . .    | none        | 30.00 |
| 15mm F2.8 full frame fisheye . . . . .         | drop-in-gel | 20.00 |
| 20mm F2.8 USM . . . . .                        | 72mm        | 10.00 |
| 24mm F2.8 . . . . .                            | 58mm        | 10.00 |
| 24mm f1.4L USM . . . . .                       | 77mm        | 35.00 |
| 24mm f1.4L USM II . . . . .                    | 77mm        | 40.00 |
| 24mm F3.5L tilt/shift (manual focus) . . . . . | 72mm        | 25.00 |
| 28mm F2.8 . . . . .                            | 52mm        | 10.00 |
| 28mm F1.8 USM . . . . .                        | 58mm        | 15.00 |
| 35mm F1.4L USM . . . . .                       | 72mm        | 35.00 |
| 35mm F2 . . . . .                              | 52mm        | 15.00 |

**Normal Lenses**

|                          |      |       |
|--------------------------|------|-------|
| 50mm F1.2L USM . . . . . | 72mm | 30.00 |
| 50mm F1.4 USM . . . . .  | 58mm | 15.00 |
| 50mm F1.8 . . . . .      | 52mm | 5.00  |

**Telephoto Lenses**

|                                               |              |        |
|-----------------------------------------------|--------------|--------|
| 85mm F1.8 USM . . . . .                       | 58mm         | 15.00  |
| 85mm F1.2L USM . . . . .                      | 72mm         | 40.00  |
| 85mm F1.2L II USM . . . . .                   | 72mm         | 45.00  |
| 90mm F2.8 tilt/shift (manual focus) . . . . . | 58mm         | 25.00  |
| 100mm F2 USM . . . . .                        | 58mm         | 15.00  |
| 100mm F2.8L macro IS USM . . . . .            | 67mm         | 25.00  |
| 100mm F2.8 USM macro . . . . .                | 58mm         | 20.00  |
| 100mm F2.8 macro . . . . .                    | 52mm         | 20.00  |
| 200mm F2.8L II USM . . . . .                  | 72mm         | 20.00  |
| 300mm F2.8L IS USM . . . . .                  | drop-in 48mm | 50.00  |
| 300mm F4 L USM . . . . .                      | 77mm         | 20.00  |
| 400mm F2.8L USM . . . . .                     | drop-in 48mm | 75.00  |
| 400mm F5.6L USM . . . . .                     | 77mm         | 30.00  |
| 500mm F4.5L USM . . . . .                     | drop-in 48mm | 60.00  |
| 600mm F4L USM . . . . .                       | drop-in gel  | 100.00 |

### Macro Lenses

|                                  |      |       |
|----------------------------------|------|-------|
| 50mm F2.5 macro                  | 52mm | 15.00 |
| 65mm F2.8 macro (manual focus)   | 58mm | 25.00 |
| (Allows 1x to 5x magnification.) |      |       |
| 100mm F2.8L macro IS USM         | 67mm | 25.00 |
| 100mm F2.8 USM macro             | 58mm | 20.00 |
| 100mm F2.8 macro                 | 52mm | 20.00 |

## CANON EOS (lenses continued)

### Zoom Lenses

|                                                                                                            |       |       |
|------------------------------------------------------------------------------------------------------------|-------|-------|
| 8-15mm F4L USM fisheye                                                                                     | none  | 30.00 |
| 10-22mm F3.5-4.5 USM EF-S                                                                                  | 77mm  | 30.00 |
| (Use w/ APS-C camera sensors. Will not mount on full frame cameras.)                                       |       |       |
| 10-24mm F3.5-4.5 Di-II LD (IF)(Tamron)                                                                     | 77mm  | 25.00 |
| (For use with APS-C sensor cameras. This lens will vignette on full frame cameras at wider focal lengths.) |       |       |
| 11-24mm F4L USM                                                                                            | none  | 40.00 |
| 16-35mm F2.8L USM                                                                                          | 77mm  | 25.00 |
| 16-35mm F2.8L USM II                                                                                       | 82mm  | 25.00 |
| 17-55mm F2.8 IS USM EF-S                                                                                   | 77mm  | 25.00 |
| (Use w/ APS-C camera sensors. Will not mount on full frame cameras)                                        |       |       |
| 18-35mm F1.8 DC HSM (Sigma)                                                                                | 72mm  | 20.00 |
| (For use with APS-C sensor cameras. This lens will vignette on full frame cameras at wider focal lengths.) |       |       |
| 18-135mm F3.5-5.6 IS EF-S                                                                                  | 67mm  | 15.00 |
| (Use w/ APS-C camera sensors. Will not mount on full frame cameras)                                        |       |       |
| 20-35mm F3.5/4.5 USM                                                                                       | 77mm  | 10.00 |
| 24-70mm F2.8L USM                                                                                          | 77mm  | 25.00 |
| 24-70mm F2.8L II USM                                                                                       | 82mm  | 30.00 |
| 24-105mm F4L IS USM                                                                                        | 77mm  | 25.00 |
| 28-75mm F2.8 Di LD (IF) (Tamron)                                                                           | 67mm  | 20.00 |
| 28-80mm F3.5/5.6III USM                                                                                    | 58mm  | 10.00 |
| 28-105mm F3.5/4.5 USM                                                                                      | 58mm  | 10.00 |
| 28-135mm F3.5/5.6 IS USM                                                                                   | 72mm  | 15.00 |
| 28-200mm F3.8/5.6 (Tamron)                                                                                 | 72mm  | 15.00 |
| 28-300mm F3.5/6.3 LD (IF) (Tamron)                                                                         | 72mm  | 20.00 |
| 28-300mm F3.5/5.6L IS USM                                                                                  | 77mm  | 35.00 |
| 55-200mm F4.5/5.6II USM                                                                                    | 52mm  | 15.00 |
| 70-200mm F2.8L USM                                                                                         | 77mm  | 35.00 |
| 70-200mm F2.8L IS USM                                                                                      | 77mm  | 40.00 |
| 70-200mm F2.8L IS II USM                                                                                   | 77mm  | 50.00 |
| 70-300mm F4/5.6 IS USM                                                                                     | 58mm  | 20.00 |
| 70-300mm F4/5.6 Di LD (Tamron)                                                                             | 58mm  | 15.00 |
| 75-300mm F4/5.6 II USM                                                                                     | 58mm  | 15.00 |
| 100-400mm F4.5/5.6L IS USM                                                                                 | 77mm  | 35.00 |
| 100-400mm F4.5/5.6L IS II USM                                                                              | 77mm  | 40.00 |
| 120-300mm F2.8 DG HSM (Sigma)                                                                              | 105mm | 40.00 |
| 200-400mm F5.6 LD (IF) (Tamron)                                                                            | 77mm  | 25.00 |

### Tilt/Shift Lenses

|                                      |      |       |
|--------------------------------------|------|-------|
| 17mm F4L tilt/shift (manual focus)   | none | 30.00 |
| 24mm F3.5L tilt/shift (manual focus) | 72mm | 25.00 |
| 90mm F2.8 tilt/shift (manual focus)  | 58mm | 25.00 |

### Accessories

|                                                                             |       |
|-----------------------------------------------------------------------------|-------|
| MC-11 Canon EF to Sony E-mount adapter                                      | 5.00  |
| (Adapter is available at no charge with rental of any Canon lens)           |       |
| NPC Polaroid back for EOS1/IN                                               | 15.00 |
| (P-back is 1/2 price w/rental of compatible body.)                          |       |
| 2X EF Extender                                                              | 10.00 |
| (Will not work w/Tamron-EOS 300mm.)                                         |       |
| 1.4X EF III Extender                                                        | 10.00 |
| 2X EF II Extender                                                           | 10.00 |
| 1:1 Life size converter EF                                                  | 2.00  |
| (Allows 1:1 macro focus with EOS 50mm F/2.5 macro.                          |       |
| Will also work with 100mm macro)                                            |       |
| Drop in polarizer for 300mm F2.8, 400mm F2.8,                               |       |
| 500mm F4.5 or 600mm F4                                                      | 5.00  |
| TC-80N3 Timer Remote Controller                                             | 5.00  |
| (Requires camera w/ 3-pin connection. Will not work w/ 70D or Rebel series) |       |
| RS-60E3 Remote Switch                                                       | 5.00  |
| EOS-1N command back E1                                                      | 10.00 |
| (Data Imprinting function: Date, time, 6 digit code or                      |       |
| 4 digit code combined with the letters A-F, 4 digit frame counter.          |       |
| Date is imprinted in the lower right-hand corner of the frame               |       |
| and may be used with or without timer functions.                            |       |
| Timer Function: self-timer, interval timer, long release timer, framer      |       |
| counter to control the number of exposures per sequence. Timer              |       |
| functions can be set in one second increments for up to 23 hours, 59        |       |
| minutes, 59 seconds.)                                                       |       |
| AC adapter ACK-E6 for 70D,6D, 7D, 5DII and 5DIII                            | 5.00  |
| Canon Rain Cover ERC-E4L                                                    | 5.00  |

### Flashes

|                                                    |       |
|----------------------------------------------------|-------|
| EOS 580 EX (w/diffuser covers 18mm)                | 20.00 |
| (E-TTL/E-TTL II capacity with EOS cameras)         |       |
| EOS 580 EX II (w/diffuser covers 18mm)             | 20.00 |
| (E-TTL/E-TTL II capacity with EOS cameras)         |       |
| EOS 600 EX-RT (w/diffuser covers 18mm)             | 25.00 |
| (E-TTL/E-TTL II capacity with EOS cameras)         |       |
| EOS ST-E3-RT                                       | 10.00 |
| (Radio control for EOS 600EX-RT)                   |       |
| MR-14EX TTL Macro Ring Light                       | 25.00 |
| (Can be mounted on lenses w/ 49-67mm filter rings) |       |
| OC-E3 off-camera shoe cord                         | 5.00  |
| EOS Speedlite stand                                | 1.00  |
| (No charge with flash rental)                      |       |

### Batteries

|                                                     |      |
|-----------------------------------------------------|------|
| Canon BP511 battery (EOS 5D/50D/40D/30D/20D/10D)    | 5.00 |
| Canon LpE6 battery (EOS 5D MkIII/5D MkII/6D/7D/70D) | 5.00 |
| Canon LpE8 battery (EOS T5i/T4i/T3i/T2i)            | 5.00 |

## SONY

|                                                  |       |
|--------------------------------------------------|-------|
| MC-11 Canon EF to Sony E mount converter (Sigma) | 10.00 |
|--------------------------------------------------|-------|

| <b>C</b>                                     | <b>EOS Rebel T2i Kit w/ 18-135mm f/3.5-5.6 IS EF-S lens</b>          | <b>EOS 6D</b>                                                          | <b>EOS 7D Mark II</b>                 | <b>EOS 5Ds R</b>               | <b>EOS 5D Mark IV</b>                                                            |
|----------------------------------------------|----------------------------------------------------------------------|------------------------------------------------------------------------|---------------------------------------|--------------------------------|----------------------------------------------------------------------------------|
| <b>Maximum Pixels</b>                        | 5184 x 3456                                                          | 5472 x 3648                                                            | 5472 x 3648                           | 8688 x 5792                    | 5760 x 3840                                                                      |
| <b>Megapixels</b>                            | 18.0                                                                 | 20.2                                                                   | 20.2                                  | 50.6                           | 30.1                                                                             |
| <b>File format</b>                           | JPEG or RAW                                                          | JPEG, RAW, mRAW or sRAW                                                | JPEG, RAW, mRAW or sRAW               | JPEG, RAW, mRAW or sRAW        | JPEG, S-Raw, M-Raw or RAW                                                        |
| <b>Max file size JPEG/RAW</b>                | 17.9mb/ 26.9mb                                                       | 6.0mb / 23.5mb                                                         | 7mb/ 24mb                             | 14.1mb / 60.5mb                | 8.8mb / 36.8mb                                                                   |
| <b>Power Source</b>                          | LP-E8 Li-Ion battery, AC                                             | LP-E6 Li-Ion battery, AC                                               | LP-E6 Li-Ion battery, AC              | LP-E6 Li-Ion battery, AC       | LP-E6 Li-Ion battery, AC                                                         |
| <b>ISO Rating</b>                            | 100-6400 (expand to 12800)                                           | 100-25600 (expands to 50-102400)                                       | 100-16000 (expand to 51200)           | 100-6400 (expand to 50-12800)  | 100-32000 (expand to 50-102400)                                                  |
| <b>Built-in output</b>                       | USB 2.0                                                              | USB 2.0, Analog video, HDMI, Wireless                                  | USB 3.0/ HDMI mini                    | USB 3.0/ HDMI mini             | USB 3.0/ HDMI mini                                                               |
| <b>Storage Media</b>                         | SD                                                                   | SD                                                                     | CF or SD                              | CF or SD                       | CF or SD                                                                         |
| <b>External flash sync</b>                   | Hot shoe                                                             | Hot shoe                                                               | Hot shoe, PC connection               | Hot shoe, PC connection        | Hot shoe, PC connection                                                          |
| <b>Exposure controls</b>                     | Auto, P, AV, TV, M                                                   | Auto, P, AV, TV, M                                                     | Auto, P, AV, TV, M                    | Auto, P, AV, TV, M             | Auto, P, AV, TV, M                                                               |
| <b>Capture Rate JPEG /RAW/JPEG &amp; RAW</b> | 3.7 FPS<br>34 images/ 6 images                                       | 4.5 FPS<br>73 images / 14 images                                       | 10 FPS<br>130 images/ 24 images       | 5 FPS<br>31 images / 12 images | 7 FPS<br>110 images / 17 images                                                  |
| <b>Lens Type</b>                             | EF/ EF-S                                                             | EF                                                                     | EF/ EF-S                              | EF                             | EF                                                                               |
| <b>Memory</b>                                | 32 GB SD                                                             | 32 GB SD                                                               | 8GB CF                                | 8 GB CF                        | 8 GB CF                                                                          |
| <b>Shutter speed range</b>                   | 30-1/8,000 sec, bulb                                                 | 30-1/4,000 sec, bulb                                                   | 30-1/8,000 sec, bulb                  | 30-1/8,000 sec, bulb           | 30-1/8,000 sec, bulb                                                             |
| <b>Crop Factor</b>                           | 1.6x                                                                 | None                                                                   | 1.6x                                  | none                           | none                                                                             |
| <b>Maximum Video Resolution</b>              | 1080p(1920x1080) at 24, 25 or 30 FPS, 720p(1280x720) at 50 or 60 FPS | 1080p (1920x1080) at 24, 25 or 30 FPS, 720p (1280x720) at 50 or 60 FPS | 1080p (1920x1080) at 60, 30 or 24 FPS | 1080p (1920x1080) at 24 FPS    | 4K (4092x2160) at 24 or 30FPS (1.7x crop), 1080p (1920x1080) at 24, 30 or 60 FPS |
| <b>Daily Rate</b>                            | <b>\$50</b>                                                          | <b>\$100</b>                                                           | <b>\$100</b>                          | <b>\$175</b>                   | <b>\$150</b>                                                                     |

# CANON DIGITAL SLR CAMERAS (continued)

|                                         |                                                                    |
|-----------------------------------------|--------------------------------------------------------------------|
| <b>C</b>                                | <b>EOS 5D<br/>Mark III</b>                                         |
| <b>Maximum<br/>Pixels</b>               | <b>5760x3840</b>                                                   |
| <b>Megapixels</b>                       | <b>22.1</b>                                                        |
| <b>File format</b>                      | <b>JPEG, RAW or<br/>sRAW</b>                                       |
| <b>Max file size<br/>JPEG/RAW</b>       | <b>7.0mb/27.1mb</b>                                                |
| <b>Power<br/>Source</b>                 | <b>LP-E6 Li-Ion battery,<br/>AC</b>                                |
| <b>ISO Rating</b>                       | 100-25600 (expands<br>to 50-102400)                                |
| <b>Built-in<br/>output</b>              | USB 2.0/HDMI mini                                                  |
| <b>Storage<br/>Media</b>                | CF or SD                                                           |
| <b>External<br/>flash sync</b>          | Hot Shoe, PC<br>connection                                         |
| <b>Exposure<br/>controls</b>            | <b>Auto, P, AV, TV, M,</b>                                         |
| <b>Capture<br/>Rate<br/>JPEG/RAW</b>    | 6 FPS<br>65 images/13 images                                       |
| <b>Lens Type</b>                        | EF                                                                 |
| <b>Memory</b>                           | 8GB CF                                                             |
| <b>Shutter<br/>speed range</b>          | <b>30-1/8,000 sec, bulb</b>                                        |
| <b>Crop Factor</b>                      | <b>None</b>                                                        |
| <b>Maximum<br/>video<br/>Resolution</b> | 1080p (1920x1080)<br>at 24 or 30 FPS, 720p<br>(1280x720) at 60 FPS |
| <b>Daily<br/>Rate</b>                   | <b>\$150</b>                                                       |



| <b>N</b>                              | <b>Nikon D4</b>                                                                        | <b>Nikon D800E</b>                                                                                | <b>Nikon D700</b>                                                                      | <b>Nikon D600</b>                                                                      | <b>Nikon D750</b>                                       | <b>Nikon D7000</b>                                                       |
|---------------------------------------|----------------------------------------------------------------------------------------|---------------------------------------------------------------------------------------------------|----------------------------------------------------------------------------------------|----------------------------------------------------------------------------------------|---------------------------------------------------------|--------------------------------------------------------------------------|
| <b>Maximum Pixels</b>                 | 4928x3280                                                                              | 7360x4912                                                                                         | 4256x2832                                                                              | 6016x4016                                                                              | 6016x4016                                               | 4928x3264                                                                |
| <b>Megapixels</b>                     | 16.2                                                                                   | 36.3                                                                                              | 12                                                                                     | 24.3                                                                                   | 24.3                                                    | 16.9                                                                     |
| <b>File format</b>                    | JPEG, RGB-TIFF<br>12 or 14 bit NEF                                                     | JPEG, RGB-TIFF,<br>12 or 14 bit NEF                                                               | JPEG,<br>RGB-TIFF<br>or 14 bit NEF                                                     | JPEG, RGB-TIFF 12<br>or 14 bit NEF                                                     | JPEG, 12<br>or 14 bit NEF                               | JPEG,<br>14 or 12 bit NEF                                                |
| <b>Max File Size<br/>JPEG/RAW</b>     | 7.9mb/34.3mb<br>49.1 mb TIFF                                                           | 16.3mb/74.4mb<br>108.2 mb TIFF                                                                    | 4mb/24.7mb<br>35.9 mb TIFF                                                             | 12.4.mb/<br>29.2mb                                                                     | 12.6mb/26.9<br>mb                                       | 7.8mb/<br>16.7mb                                                         |
| <b>Power Source</b>                   | EN-EL 18 Li-Ion<br>battery, AC                                                         | EN-EL 15 Li-Ion<br>battery, AC                                                                    | EN-EL3e Li-<br>Ion battery,<br>AC                                                      | EN-EL15 Li-Ion<br>battery, AC                                                          | EN-EL 15 Li-<br>Ion battery,<br>AC                      | EN-EL 15 Li-Ion<br>battery, AC                                           |
| <b>ISO Rating</b>                     | 100-12800 (expand<br>to 50-208000)                                                     | 100-6400 (expand<br>to 50-25600)                                                                  | 200-6400<br>(expand to<br>100-25600)                                                   | 100-6400 (expand to<br>50-25600)                                                       | 100-12800<br>(expands to<br>50-51200)                   | 100-6400 (expand to<br>25600)                                            |
| <b>Built-in output</b>                | USB 2, HDMI                                                                            | USB 3.0, HDMI                                                                                     | USB II                                                                                 | USB 2, HDMI                                                                            | USB 2, HDMI,<br>wireless                                | USB 2, NTSC or<br>PAL video, HDMI                                        |
| <b>Storage Media</b>                  | CF I, XQD                                                                              | CF I, SD                                                                                          | CF I & II,<br>microdrive                                                               | SD Memory                                                                              | SD Memory                                               | SD Memory                                                                |
| <b>External flash sync</b>            | Hot shoe, PC<br>connection                                                             | Hot shoe, PC<br>connection                                                                        | Hot shoe, PC<br>connection                                                             | Hot shoe                                                                               | Hot shoe                                                | Hot shoe                                                                 |
| <b>Exposure controls</b>              | Auto,<br>P, S, A, M                                                                    | Auto,<br>P, S, A, M                                                                               | Auto,<br>P, S, A, M                                                                    | Auto,<br>P, S, A, M                                                                    | Auto,<br>P, S, A, M                                     | Auto,<br>P, S, A, M                                                      |
| <b>Capture Rate<br/>JPEG<br/>/RAW</b> | 10-11 FPS<br>170 images/69<br>images (14 bit NEF)                                      | 4 FPS in \FX<br>mode100images/16i<br>mages, 5 FPS in DX<br>or 1.2X mode<br>100images/38<br>images | 4-5 FPS<br>DX mode 130<br>images,<br>FX mode 52<br>images/<br>20 images<br>(14bit RAW) | 5.5 FPS<br>57 images/<br>16 images                                                     | 6.5FPS<br>100 images/<br>15 images                      | 6 FPS<br>31 images/<br>10 images                                         |
| <b>Lens Type</b>                      | Nikon F Mount                                                                          | Nikon F Mount                                                                                     | Nikon F<br>Mount                                                                       | Nikon F Mount                                                                          | Nikon F<br>Mount                                        | Nikon F Mount                                                            |
| <b>Memory</b>                         | 8 GB CF card                                                                           | 8 GB CF card                                                                                      | 4 GB CF card                                                                           | 32 GB SD card                                                                          | 16 GB SD<br>card                                        | 32 GB SD card                                                            |
| <b>Shutter speed range</b>            | 30-1/8,000 sec, bulb                                                                   | 30-1/8,000 sec, bulb                                                                              | 30-1/8,000 sec,<br>bulb                                                                | 30-1/8,000 sec, bulb                                                                   | 30-1/4,000 sec,<br>bulb, X200                           | 30-1/8,000 sec, bulb,<br>X250                                            |
| <b>Crop Factor</b>                    | None in FX mode,<br>1.5x in DX mode                                                    | None in FX mode,<br>1.5x in DX mode                                                               | None in FX<br>mode, 1.5x in<br>DX mode                                                 | None in FX mode,<br>1.5x in DX mode                                                    | none in FX<br>mode, 1.5x in<br>DX mode                  | 1.5x                                                                     |
| <b>Maximum Video Resolution</b>       | 1080p (1920x1080)<br>at 30, 25 or 24 FPS,<br>720p (1280x720) at<br>60, 50, 30 or 25fps | 1080p (1920x1080)<br>at 30, 25 or 24 FPS,<br>720p (1280x720) at<br>60, 50, 30 or 25fps            | none                                                                                   | 1080p (1920x1080) at<br>30, 25 or 24 FPS,<br>720p (1280x720) at<br>60, 50, 30 or 25fps | 1080p<br>(1920x1080) at<br>60p, 50p, 30p,<br>25p or 24p | 1080p (1920x1080) at<br>24 FPS, 720p<br>(1280x720)<br>or640x424 at 30fps |
| <b>Daily Rate</b>                     | <b>\$200</b>                                                                           | <b>\$150</b>                                                                                      | <b>\$100</b>                                                                           | <b>\$100</b>                                                                           | <b>\$100</b>                                            | <b>\$75</b>                                                              |

# NIKON DIGITAL SLR CAMERAS (continued)

|                                 |                                   |
|---------------------------------|-----------------------------------|
| <b>N</b>                        | <b>Nikon D300</b>                 |
| <b>Maximum Pixels</b>           | 4288x2848                         |
| <b>Megapixels</b>               | 12.3                              |
| <b>File format</b>              | JPEG, RGB-TIFF or 14-bit NEF      |
| <b>Max File Size JPEG/RAW</b>   | 3 mb/25.3 mb<br>35.9 mb TIFF      |
| <b>Power Source</b>             | EN-EL 3e Li-Ion battery, AC       |
| <b>ISO Rating</b>               | 200-3200<br>(expands to 100-6400) |
| <b>Built-in output</b>          | USB 2                             |
| <b>Storage Media</b>            | CF I + II Microdrive              |
| <b>External flash sync</b>      | Hot Shoe, PC Connection           |
| <b>Exposure Controls</b>        | Auto, P,S,A,M                     |
| <b>Capture Rate JPEG/RAW</b>    | 6FPS<br>100 images/19 images      |
| <b>Lens Type</b>                | Nikon F Mount                     |
| <b>Memory</b>                   | 1 GB CF card                      |
| <b>Shutter Speed Range</b>      | 30- 1/8000 sec, bulb              |
| <b>Crop Factor</b>              | 1.5X                              |
| <b>Maximum Video Resolution</b> | none                              |
| <b>Daily Rate</b>               | <b>\$90</b>                       |

# DIGITAL ACCESSORIES

|                                                                                                                                        |       |
|----------------------------------------------------------------------------------------------------------------------------------------|-------|
| 64 Gigabyte Delkin 1000X CF .....                                                                                                      | 30.00 |
| 64 Gigabyte CF .....                                                                                                                   | 25.00 |
| 32 Gigabyte CF .....                                                                                                                   | 20.00 |
| 16 Gigabyte CF .....                                                                                                                   | 15.00 |
| 8 Gigabyte CF .....                                                                                                                    | 10.00 |
| 2 or 4 Gigabyte CF .....                                                                                                               | 5.00  |
| 64 Gigabyte Delkin 1900X SD.. .....                                                                                                    | 30.00 |
| 64 Gigabyte SD.. .....                                                                                                                 | 25.00 |
| 32 Gigabyte SD.. .....                                                                                                                 | 20.00 |
| 16 Gigabyte SD.. .....                                                                                                                 | 15.00 |
| 8 Gigabyte SD .....                                                                                                                    | 10.00 |
| 2 or 4 Gigabyte SD .....                                                                                                               | 5.00  |
| (When shooting 1080p video on a DSLR, one gigabyte will hold about 2½ minutes. Cards used to record video should be Class 6 or faster) |       |
| SD to CF Adapter .....                                                                                                                 | 2.00  |
| (Free w/ SD card rental)                                                                                                               |       |
| Epson P2000 40GB(portable storage device) .....                                                                                        | 25.00 |

## Adapters/Readers

|                                                         |       |
|---------------------------------------------------------|-------|
| USB 3.0 multi-format reader .....                       | 10.00 |
| Parallel reader .....                                   | 5.00  |
| (Used for downloading of images through parallel port.) |       |
| 7 Port USB hub .....                                    | 5.00  |
| 4 Port Firewire Hub .....                               | 5.00  |
| PCMCIA Card Adapter .....                               | 1.00  |
| PCMCIA ExpressCard Adapter .....                        | 2.00  |

## Batteries

|                                                            |       |
|------------------------------------------------------------|-------|
| Nikon EnEl15 battery (D800/D600/D7000) .....               | 5.00  |
| Nikon EnEl14 battery (D3 series) .....                     | 5.00  |
| Nikon EnEl13e battery (D700//D300/D90) .....               | 5.00  |
| Canon BP511 battery (EOS 10D/20D/30D/40D/50D/5D) .....     | 5.00  |
| Canon LpE6 battery (EOS 5D Mk III/5D Mk II/ 7D/60D/6D) ... | 5.00  |
| Canon LpE8 battery (EOS T2i/T3i/T4i) .....                 | 5.00  |
| Quantum Turbo .....                                        | 15.00 |
| (For some Digital SLR cameras.)                            |       |

## Computers

|                                                                  |       |
|------------------------------------------------------------------|-------|
| Toshiba Laptop Satellite L775 .....                              | 50.00 |
| (Intel Core i3, 2.2Ghz, 4GB RAM, Win 7, CD/DVD RW)               |       |
| Sony Laptop Vaio PCG-GRT150 .....                                | 60.00 |
| (Pentium IV, 2.84 ghz, 512 MB Ram, WinXP, and CD RW)             |       |
| Compaq Laptop 777CL .....                                        | 60.00 |
| (Pentium Dual Core, 1.87 ghz, 2 GB Ram, WinVista, and CD/DVD RW) |       |

## Scanners

|                                                  |        |
|--------------------------------------------------|--------|
| Nikon Coolscan IV (35mm only) .....              | 50.00  |
| Nikon Coolscan 8000 (for film up to 6x9cm) ..... | 100.00 |

## Cords

|                                      |      |
|--------------------------------------|------|
| 15' Firewire 6P to 6P.. .....        | 2.00 |
| 15' Firewire 4P to 6P .....          | 2.00 |
| 12' USB 2.0 to USB Mini B cord ..... | 2.00 |
| 15' USB cord .....                   | 2.00 |

## Dye Sub Printer

|                                          |        |
|------------------------------------------|--------|
| Canon CD 300 .....                       | 25.00  |
| DNP DS40 Dye Sublimation printer .....   | 100.00 |
| (See Special Event Package below.)       |        |
| Sony DR150 Dye Sublimation printer ..... | 100.00 |
| (See Special Event Package below.)       |        |
| Sony DR150 paper holder .....            | 10.00  |
| (Allows faster changing of paper rolls)  |        |

# LOCATION PRINTING

Print Package includes the following items: DNP DS40 or Sony DR-150 Digital Printer, laptop computer, and an optional 7 port USB hub .....

100.00  
(This printer package is designed for on site printing at events without having your customers wait for the lab.)

Either printer will print 4 X 6 prints under 9 seconds apiece or 5 X 7 prints under 15 seconds apiece. At these printing speeds you can keep up with the most demanding print orders right on location. This is a dye-sublimation print process so it has long lasting print stability and great color. Each print size requires the paper roll/ribbon to be changed out.)

Express Digital Darkroom Dongle .....

25.00  
(Activates Express Digital Darkroom software v 8.9 or 9.1)

(Media pricing subject to change. Please call to verify pricing).

| Print material            | 1-100     | 101-249   | 250+     |
|---------------------------|-----------|-----------|----------|
| 4x6 (550 prints per roll) | .70 each  | .63 each  | .56 each |
| 5x7 (335 prints per roll) | 1.18 each | 1.06 each | .95 each |
| Folders (4x6 or 5x7)      | 1-100     | 101-249   | 250+     |
| Series 300 white          | .56 each  | .52 each  | .45 each |
| Series 747 Wood grain     | .80 each  | .74 each  | .64 each |
| Profile White Marble      | 1.20 each | 1.10 each | .95 each |

# MEDIUM FORMAT

## HASSELBLAD (2 1/4 X 2 1/4)

### Bodies

503CX w/WL finder and back ..... 25.00

### Lenses

50mm F4.0 CF ..... bay 60 ..... 25.00  
60mm F3.5 CF ..... bay 60 ..... 20.00  
80mm F2.8 CF ..... bay 60 ..... 15.00  
120mm F5.6 C ..... bay 50 ..... 20.00  
150mm F4.0 C/CF ..... bay 50/60 ..... 25.00  
250mm F5.6 C ..... bay 50 ..... 25.00

### Close-up Accessories

Extension tube (10mm, 16mm, 21mm, 56mm) ..... ..3.00

### Filters (Bay 50/60)

Bay 60 Tiffen Soft FX3, 4-point star, CC30M, UV .... ..3.00  
Bay 60 to 77mm step-up ring ..... ..1.00

### Viewfinders

PM5 prism finder ..... 10.00

### Accessories

2x converter (Rokunar) ..... 10.00  
Ground glass adapter ..... ..3.00  
Compendium Lens Shade for B50 or B60 ..... ..8.00

### Film Backs

A12 back (12 exposures on 120 film.) ..... ..8.00  
A16 back (16 exposures on 120 film.) ..... ..8.00  
A24 back (24 exposures on 220 film.) ..... ..8.00  
Polaroid back (Polaroid 100 or NPC) ..... 10.00

## MAMIYA 645 (2 1/4 x 1 5/8)

### Bodies

M645 Pro TL w/WL finder, pro drive and back .... 25.00

### Lenses

45mm F2.8 ..... 77mm ..... 15.00  
70mm F2.8 leaf shutter ..... 58mm ..... 15.00  
105-210mm F4.5 ..... 77mm ..... 30.00

### Accessories

Pro Drive ..... ..5.00

### Film Backs

Pro film back (120 or 220 insert included) ..... ..8.00  
120/220 inserts ..... ..2.00  
Polaroid back ..... 10.00

## MAMIYA 645 AF (2 1/4 x 1 5/8)

M645 AFD body w/120/220 back ..... 30.00

### Lenses

35mm F3.5 AF ..... 77mm ..... 25.00  
45mm F2.8 AF ..... 67mm ..... 20.00  
55mm F2.8 AF ..... 58mm ..... 20.00  
80mm F2.8 AF ..... 58mm ..... 15.00  
150mm F3.5 AF ..... 58mm ..... 20.00  
55-110mm F4.5 AF ..... 67mm ..... 25.00

### Accessories

M645 AF film back ..... ..8.00  
M645 AF polaroid back ..... 15.00  
M645 AF polaroid back extender ..... ..2.00

## MAMIYA 7II

Mamiya 7II body ..... 20.00

### Lenses

43mm F4.5 ..... 67mm ..... 25.00  
65mm F4.0 ..... 58mm ..... 20.00  
80mm F4.0 ..... 58mm ..... 15.00  
150mm F4.5 ..... 67mm ..... 20.00  
Mamiya 7II body and all lenses package ..... 75.00

# LARGE FORMAT

## 4 x 5 C A M E R A S

(Camera price includes standard rail, cable release, dark cloth,  
changing bag, lupe, and 5 film holders upon request.)

|                                      |       |
|--------------------------------------|-------|
| Sinar Norma . . . . .                | 20.00 |
| (Need to use old style Sinar boards) |       |
| Sinar F . . . . .                    | 20.00 |
| Toyo 45GX . . . . .                  | 25.00 |

### Accessories

|                                                                                            |        |
|--------------------------------------------------------------------------------------------|--------|
| 6" extension rail (Sinar only).. . . . .                                                   | ..3.00 |
| 12" extension rail (Sinar or Toyo) . . . . .                                               | ..4.00 |
| 18" extension rail (Sinar only) . . . . .                                                  | ..5.00 |
| Additional bellows (Sinar only, regular or bag) . . . . .                                  | ..3.00 |
| Reflex viewer . . . . .                                                                    | ..8.00 |
| Additional front standard . . . . .                                                        | 15.00  |
| Lensboards only . . . . .                                                                  | ..2.00 |
| Sinar Pro shade . . . . .                                                                  | ..5.00 |
| (Lensboards for Sinar, Calumet, Cambo, Toyo/Omega,<br>Horseman, some Graflex and Linhoff.) |        |

### Film Holders and Polaroid Backs

|                                      |       |
|--------------------------------------|-------|
| 4x5 film holders . . . . .           | 1.00  |
| Polaroid 545 back . . . . .          | 5.00  |
| Calumet 4x5 roll film back . . . . . | 10.00 |
| (Takes 6x7 images with 4x5 cameras.) |       |

## V I E W C A M E R A L E N S E S

|                                                            | Coverage | Filter | Copal       |       |
|------------------------------------------------------------|----------|--------|-------------|-------|
| 65mm F4.0 Nikkor SW . . . . .                              | 4x5      | . 67mm | . 0 . . . . | 30.00 |
| 75mm F4.5 Nikkor SW . . . . .                              | 4x5      | . 67mm | . 0 . . . . | 30.00 |
| 90mm F8.0 Caltar IIS . . . . .                             | 4x5      | . 67mm | . 0 . . . . | 25.00 |
| 120mm F5.6 Nikkor AM macro                                 | 4x5      | . 52mm | . 0 . . . . | 20.00 |
| 150mm F5.6 APO Symmar-S . .                                | 4x5      | . 58mm | . 0 . . . . | 15.00 |
| 180mm F5.6 Rodenstock. . . . .                             | 5x7      | . 58mm | . 1 . . . . | 20.00 |
| 210mm F5.6 Fujinon W . . . . .                             | 5x7      | . 58mm | . 1 . . . . | 25.00 |
| 210mm F5.6 APO Symmar-S . .                                | 5x7      | . 72mm | . 1 . . . . | 25.00 |
| 240mm F5.6 Komuranon . . . . .                             | 8x10     | 72mm   | . 3 . . . . | 25.00 |
| 300mm F5.6 Fujinon L . . . . .                             | 8x10     | 67mm   | . 3 . . . . | 25.00 |
| 600mm F9 Nikkor ED-T . . . . .                             | 8x10     | 95mm   | . 3 . . . . | 35.00 |
| (16" rail for focus at infinity)                           |          |        |             |       |
| 800mm F12 Nikkor ED-T . . . . .                            | 8x10     | 95mm   | . 3 . . . . | 35.00 |
| (21" rail for focus at infinity)                           |          |        |             |       |
| 1200mm F18 Nikkor ED-T . . . .                             | 8x10     | 95mm   | . 3 . . . . | 35.00 |
| (30" rail for focus at infinity)                           |          |        |             |       |
| Nikkor Rear Elements (600, 800, 1200) . . . . .            |          |        |             | 20.00 |
| Set of three Nikkor ED-T Lenses (600, 800, 1200) . . . . . |          |        |             | 75.00 |

# ULTRA-WIDE PANORAMIC CAMERAS

|                                                                                                                                                                                                                                                                                                                                                                                            |        |
|--------------------------------------------------------------------------------------------------------------------------------------------------------------------------------------------------------------------------------------------------------------------------------------------------------------------------------------------------------------------------------------------|--------|
| Brooks Veriwide . . . . .                                                                                                                                                                                                                                                                                                                                                                  | 20.00  |
| 6 x 9cm w/47mm F8 Super Angulon lens. Uses 120 or 220 film.<br>90 degree diagonal angle of view.                                                                                                                                                                                                                                                                                           |        |
| Polaroid back for Veriwide . . . . .                                                                                                                                                                                                                                                                                                                                                       | 10.00  |
| Hulcherama . . . . .                                                                                                                                                                                                                                                                                                                                                                       | 100.00 |
| Motorized 360 degree Spin Camera angle of view. Accepts<br>Mamiya 645 Lenses (35mm, 45mm, 80mm, 150mm available.) Electronic<br>rotation control provides effective shutter speeds of 2 sec. to 1/200 sec.<br>Close focusing to 3 ft. with some lenses. Uses 120 or 220 film. Heavy duty<br>tripod strongly recommended. Includes spare battery, charger and remote<br>cable.              |        |
| Alpa 70 Rotocamera . . . . .                                                                                                                                                                                                                                                                                                                                                               | 75.00  |
| Motorized 360 degree spin camera w/Rodenstock Grandagon 75mm F6.8<br>lens. Perspective correction. Electronic rotation control provides effective<br>shutter speeds of 1/15-1/250 sec.<br>Focus is fixed at infinity, so close-up limited by hyperfocal<br>distance (3.7m at F32). Uses 220 or 70mm film. Heavy duty<br>tripod strongly recommended. Includes charger and<br>remote cable. |        |
| Fuji GX617 . . . . .                                                                                                                                                                                                                                                                                                                                                                       | 75.00  |
| 6x17mm panoramic camera that accepts interchangeable lenses.<br>Makes 4 exposures on 120 film or 8 exposures on 220 film.<br>Price includes one lens and ground glass for previewing<br>composition.                                                                                                                                                                                       |        |
| Fuji EBC Fujinon SW 90mm F5.6 lens . . . . .                                                                                                                                                                                                                                                                                                                                               | 30.00  |
| Interchangeable lens for the GX617. Lens hood, optical<br>viewfinder, and center spot filter included. 77mm filter.                                                                                                                                                                                                                                                                        |        |
| Fuji EBC Fujinon SW 105mm F8 lens. . . . .                                                                                                                                                                                                                                                                                                                                                 | 30.00  |
| Interchangeable lens for the GX617. Lens hood, optical<br>viewfinder, and center spot filter included. 77mm filter.                                                                                                                                                                                                                                                                        |        |
| Fuji EBC Fujinon SW 180mm F6.7 lens . . . . .                                                                                                                                                                                                                                                                                                                                              | 30.00  |
| Interchangeable lens for the GX617. Lens hood and optical<br>viewfinder included. 77mm filter.                                                                                                                                                                                                                                                                                             |        |
| Fuji EBC Fujinon 300mm F8 lens . . . . .                                                                                                                                                                                                                                                                                                                                                   | 35.00  |
| Interchangeable lens for the GX617. Lens hood and optical<br>viewfinder included. 67mm filter.                                                                                                                                                                                                                                                                                             |        |
| Roundshot 35S . . . . .                                                                                                                                                                                                                                                                                                                                                                    | 40.00  |

# POLAROID

## Cameras

|                                                                                                                            |       |
|----------------------------------------------------------------------------------------------------------------------------|-------|
| Polaroid One-Step 600 flash . . . . .                                                                                      | 8.00  |
| Polaroid 195 . . . . .                                                                                                     | 15.00 |
| (114mm F3.8 normal Lens. Leaf shutter speeds<br>B to 1/500. Uses pack film. Flash sync at all speeds.)                     |       |
| Polaroid 600SE . . . . .                                                                                                   | 20.00 |
| (Leaf shutter speeds B to 1/500. Flash sync at all speeds.<br>Uses pack film. Price includes one of the following lenses:) |       |
| Polaroid 600SE 75mm F5.6 wide-angle lens . . . . .                                                                         | 10.00 |
| Polaroid 600SE 127mm F4.7 normal lens . . . . .                                                                            | 10.00 |
| Polaroid 600SE 150mm F5.6 short telephoto lens . . . . .                                                                   | 10.00 |
| O&ER Simulshot passport camera . . . . .                                                                                   | 25.00 |
| (Two photos with built-in flash. Uses Pack Film.)                                                                          |       |
| Polaroid 454 miniportrait passport camera . . . . .                                                                        | 30.00 |
| (Four photos. Flash not included. Uses 4x5 film.<br>Includes Polaroid 545 back.)                                           |       |

## Film Backs/Processors

|                                                 |      |
|-------------------------------------------------|------|
| Polaroid 545 back (for 4 x 5 cameras) . . . . . | 6.00 |
|-------------------------------------------------|------|

# UNDERWATER CAMERAS

|                                                                                                                                                                                                                                             |       |
|---------------------------------------------------------------------------------------------------------------------------------------------------------------------------------------------------------------------------------------------|-------|
| Nikonos V body w/one lens . . . . .                                                                                                                                                                                                         | 15.00 |
| (Choice of 28mm or 35mm lens. Self-contained underwater<br>and all-weather camera with aperture priority automation and<br>manually selectable shutter speeds from 1/30 sec. to 1/1000 sec.<br>TTL Flash Capacity. Waterproof to 160 feet.) |       |
| 15mm F2.8 underwater ( w/DP II finder) . . . . .                                                                                                                                                                                            | 25.00 |
| 28mm F3.5 underwater . . . . .                                                                                                                                                                                                              | 5.00  |
| 35mm F2.5 amphibious . . . . .                                                                                                                                                                                                              | 5.00  |
| Nikonos SB105 underwater TTL flash . . . . .                                                                                                                                                                                                | 15.00 |
| Nikonos close-up U.W. kit . . . . .                                                                                                                                                                                                         | 5.00  |
| Canon Sure Shot A1 panoramic (waterproof to 16ft) . . . . .                                                                                                                                                                                 | 10.00 |

# STUDIO LIGHTING

## SPEEDOTRON

### Power Supplies

|                              |       |
|------------------------------|-------|
| 1205 CX power supply: 1200ws | 30.00 |
| 2401 power supply: 2400ws    | 40.00 |
| 2403 power supply: 2400ws    | 40.00 |
| 4803 power supply: 4800ws    | 45.00 |

### Lampheads

(Includes 7" or 11" reflector)

|                            |       |
|----------------------------|-------|
| 102 lamphead: 3200ws       | 15.00 |
| 105 quad-lamphead: 9600ws. | 20.00 |
| 202 VF lamphead: 2400ws..  | 15.00 |
| 206 VF lamphead: 4800ws..  | 20.00 |
| HERSHEY Ring Light: 2400ws | 20.00 |

### Accessories

|                                     |      |
|-------------------------------------|------|
| Reflector: 7", 11" or 16"           | 2.00 |
| Snoot                               | 2.00 |
| 20' head extension cable            | 2.00 |
| Barndoor (fits 7" or 11" reflector) | 2.00 |
| Grid (fits 7" reflector)            | 2.00 |

## NORMAN

### Kits

|                                                                                                          |       |
|----------------------------------------------------------------------------------------------------------|-------|
| 600 SP Kit                                                                                               | 50.00 |
| (Includes (1) 600 ws Series 500 power supply,<br>(3) LH 500 lampheads, (3) 9' stands and (3) umbrellas.) |       |

### Power Supplies

|                               |       |
|-------------------------------|-------|
| 2000-PS power supply: 2000 ws | 35.00 |
| P2000 power supply: 2000ws    | 40.00 |
| P2424 power supply: 2400ws    | 40.00 |
| P4000 power supply: 4000ws    | 45.00 |

### Lampheads

(Includes 5" or 10" reflector)

|                            |       |
|----------------------------|-------|
| LH500 lamphead: 600ws      | 15.00 |
| LH2000 lamphead: 2400ws    | 15.00 |
| LH2400 lamphead: 2400ws    | 15.00 |
| LH2500 lamphead: 2500ws    | 15.00 |
| LH4000 lamphead: 4000ws    | 20.00 |
| HERSHEY Ring Light: 2400ws | 20.00 |

### Accessories

|                                 |      |
|---------------------------------|------|
| Reflector: 5" or 10"            | 2.00 |
| 5X 20" Reflector (beauty dish)  | 5.00 |
| RP-1 Diffusion Dome             | 5.00 |
| (for Norman lamphead LH2500)    |      |
| Snoot                           | 2.00 |
| 20' Head extension cable        | 2.00 |
| Barndoor: 5" or 10"             | 2.00 |
| Grid: 5" or 10"                 | 2.00 |
| 5" grid set                     | 5.00 |
| (Includes 1 holder and 3 grids) |      |

## PHOTOGENIC

### Kits

|                                                                |       |
|----------------------------------------------------------------|-------|
| Photogenic 2 light kit                                         | 60.00 |
| (Includes: (2) umbrellas, (2) 9' stands, (2) 600ws monolights) |       |
| Photogenic 3 light kit                                         | 90.00 |
| (Includes: (3) umbrellas, (3) 9' stands, (3) 600ws monolights) |       |

### Monolights (power supply and lamphead contained in 1 unit)

(Includes 7" reflector)

|                                                 |       |
|-------------------------------------------------|-------|
| Photogenic Powerlight 600 monolight: 600ws      | 30.00 |
| Photogenic Powerlight 2500DR monolight: 1000ws  | 35.00 |
| (with built-in Pocket Wizard wireless receiver) |       |

### Accessories

|                                                                                                                                                   |       |
|---------------------------------------------------------------------------------------------------------------------------------------------------|-------|
| Photogenic Ion                                                                                                                                    | 20.00 |
| (Lithium-ion battery and pure sine wave inverter, can be used to power<br>Photogenic Powerlights and other strobes in locations with no AC power) |       |
| Extra battery for Photogenic Ion                                                                                                                  | 10.00 |
| Photogenic softboxes: 21"x21"                                                                                                                     | 5.00  |
| 16" reflector w/ diffusion                                                                                                                        | 5.00  |
| 7" Diffusion                                                                                                                                      | 2.00  |
| 7" medium grid                                                                                                                                    | 2.00  |
| 7" fine grid                                                                                                                                      | 2.00  |
| Small snoot (3" diameter)                                                                                                                         | 2.00  |
| Large snoot (5" diameter)                                                                                                                         | 2.00  |
| Barn door                                                                                                                                         | 2.00  |

## PROFOTO

### Power Supplies

|                                  |       |
|----------------------------------|-------|
| Pro-7A 2400 power supply: 2400ws | 75.00 |
| Pro-7A 1200 power supply: 1200ws | 65.00 |

### Lampheads

|                        |       |
|------------------------|-------|
| Pro7A lamphead: 2400ws | 20.00 |
|------------------------|-------|

### Accessories

|                                                                                                               |       |
|---------------------------------------------------------------------------------------------------------------|-------|
| Zoom Reflector                                                                                                | 10.00 |
| Zoom Reflector grids (20 or 40 degree)                                                                        | 5.00  |
| (Includes grid holder. Fits <i>only</i> Zoom Reflector)                                                       |       |
| Zoom Reflector grid set ((1) 20and (2) 40 degree)                                                             | 10.00 |
| (Includes grid holder. Fits <i>only</i> Zoom Reflector)                                                       |       |
| Magnum Reflector (50 degree spread)                                                                           | 10.00 |
| 7" Grid Reflector                                                                                             | 5.00  |
| 7" grids (3, 10, 20, 30 or 40 degree)                                                                         |       |
| (Fits <i>only</i> 7" Grid Reflector, not included. No additional holder required)                             |       |
| 7" grid set (10, 20 and 40 degree)                                                                            | 10.00 |
| (Fits <i>only</i> 7" Grid Reflector, not included. No additional holder required)                             |       |
| Disc Reflector                                                                                                | 5.00  |
| (Allows umbrella to be mounted. This is the standard reflector included<br>with all Pro-7B lamphead rentals.) |       |
| Head extension cable (16 feet/5 meters)                                                                       | 10.00 |
| 16" Beauty Dish (Silver only. Includes diffuser)                                                              | 10.00 |
| Grid for 16" beauty dish (20 or 40 degree)                                                                    | 10.00 |
| 22" Beauty Dish (soft white or silver)                                                                        | 15.00 |
| Grid for 22" beauty dish (20 degree)                                                                          | 10.00 |
| (Fits <i>only</i> white 22" beauty dish)                                                                      |       |

## BALCAR

### Monolights (power supply and lamphead contained in 1 unit)

Monobloc II Monolight: 1000 ws . . . . . 25.00  
(Includes 7" reflector. Stroboscopic up to 12 flashes per second)

### Lampheads

102U lamphead . . . . . 15.00  
(Includes 7" reflector. Requires Monobloc II as power supply)

### Accessories

Fiber Optic 3-light kit . . . . . 15.00  
Head extension cable . . . . . 2.00

# PORTABLE FLASH

## ON-CAMERA FLASH

Vivitar 283/285 . . . . . 10.00  
Nikon SB910 (w/diffusion dome covers 14mm.) . . . . . 20.00  
(iTTL capacity w/ Nikon digital cameras)  
Nikon SB900 (w/diffusion dome covers 14mm.) . . . . . 20.00  
(iTTL capacity w/ Nikon digital cameras)  
Nikon SB800 (w/diffusion dome covers 14mm.) . . . . . 20.00  
(iTTL & D-TTL capacity w/ Nikon cameras)  
EOS 580 EX (w/ built-in diffuser covers 18mm) . . . . . 20.00  
(E-TTL II capacity with select EOS digital cameras)  
EOS 580 EX II (w/ built-in diffuser covers 18mm) . . . . . 20.00  
(E-TTL II capacity with EOS digital cameras)  
EOS 600 EX-RT (w/diffuser covers 18mm) . . . . . 25.00  
(E-TTL/E-TTL II capacity with EOS cameras)  
EOS MR-14EX TTL Macro Ring Light . . . . . 25.00  
(Can be mounted on lenses w/ 49-67mm filter rings)

### Flash Accessories

Nikon SC-17 off-camera shoe cord . . . . . 3.00  
Nikon SC-18 off-camera shoe cord . . . . . 3.00  
Nikon SC-28 off-camera shoe cord . . . . . 3.00  
Nikon SC-29 off-camera shoe cord . . . . . 3.00  
(built-in AF-assist lamp)  
Nikon SD-800 5<sup>th</sup> battery for SB-800 . . . . . 1.00  
(No charge with SB-800 rental)  
Nikon or EOS speedlight Stands . . . . . 1.00  
(No charge with speedlight rental)  
Canon OC-E3 off-camera shoe cord . . . . . 5.00

## PORTABLE POWER FOR AC STROBES

Photogenic Ion . . . . . 20.00  
(Lithium-ion battery and pure sine wave inverter, can be used to power  
Photogenic Powerlights and other strobes in locations with no AC power)  
Extra battery for Photogenic Ion . . . . . 10.00

## NORMAN

### Kits

400B power supply w/head w/5' or 20' cable . . . . . 25.00

### Lampheads

400B head w/5' or 20' cable . . . . . 5.00

### Accessories

Spare battery for 400B (set of two) . . . . . 5.00  
2DRP diffusion reflector (130 degree) . . . . . 2.00  
2H telephoto reflector . . . . . 2.00  
(15 degrees, F16 at 100' at ISO 100.)  
Y-cable . . . . . 2.00  
Speedring . . . . . 2.00  
Stand adapter . . . . . 1.00  
20' extension cable . . . . . 2.00  
Camera bracket . . . . . 2.00  
External charging cable . . . . . 1.00  
Dual charging cable . . . . . 1.00

## SUNPACK

Sunpak 544 w/Quantum battery II . . . . . 25.00

*(portable flash is continued on next page)*



(portable flash continued)

## PROFOTO

### Kits

|                                                                                           |       |
|-------------------------------------------------------------------------------------------|-------|
| Profoto Pro-7B Kit . . . . .                                                              | 75.00 |
| (Includes: (1) 1200ws Pro-7B Power supply, (1) Pro-B lamphead,<br>(1) Battery Pro-7B/B2.) |       |

### Lampheads

|                                  |       |
|----------------------------------|-------|
| Profoto Pro-B lamphead . . . . . | 20.00 |
| Hershey ring light . . . . .     | 20.00 |

### Accessories

|                                                                                                               |       |
|---------------------------------------------------------------------------------------------------------------|-------|
| Pro-7B/B2 Battery . . . . .                                                                                   | 15.00 |
| Pro-7B/B2 Battery Charger . . . . .                                                                           | 5.00  |
| Zoom Reflector . . . . .                                                                                      | 10.00 |
| Zoom Reflector grids (20 or 40 degree) . . . . .                                                              | 5.00  |
| (Includes grid holder. Fits <i>only</i> Zoom Reflector)                                                       |       |
| Zoom Reflector grid set ((1) 20and (2) 40 degree) . . . . .                                                   | 10.00 |
| (Includes grid holder. Fits <i>only</i> Zoom Reflector)                                                       |       |
| Magnum Reflector (50 degree spread) . . . . .                                                                 | 10.00 |
| 7" Grid Reflector . . . . .                                                                                   | 5.00  |
| 7" grids (3, 10, 20, 30 or 40 degree) . . . . .                                                               | 5.00  |
| (Fits <i>only</i> 7" Grid Reflector, not included. No additional holder required)                             |       |
| 7" grid set (10, 20 and 40 degree) . . . . .                                                                  | 10.00 |
| (Fits <i>only</i> 7" Grid Reflector, not included. No additional holder required)                             |       |
| Disc Reflector . . . . .                                                                                      | 5.00  |
| (Allows umbrella to be mounted. This is the standard reflector included<br>with all Pro-7B lamphead rentals.) |       |
| Head extension cable (16 feet/5 meters) . . . . .                                                             | 10.00 |
| 16" Beauty Dish (Silver only. Includes diffuser) . . . . .                                                    | 10.00 |
| Grid for 16" beauty dish (20 or 40 degree) . . . . .                                                          | 10.00 |
| 22" Beauty Dish (soft white or silver) . . . . .                                                              | 15.00 |
| Grid for 22" beauty dish (20 degree) . . . . .                                                                | 10.00 |
| (Fits <i>only</i> white 22" beauty dish)                                                                      |       |

## QUANTUM

### Power Supplies

|                                                                                                                                      |       |
|--------------------------------------------------------------------------------------------------------------------------------------|-------|
| Quantum Turbo 3 (½ price w/rental of flash) . . . . .                                                                                | 20.00 |
| Quantum Turbo battery (½ price w/rental of flash) . . . . .                                                                          | 15.00 |
| Quantum Turbo 2x2 (½ price w/rental of flash) . . . . .                                                                              | 15.00 |
| (all Turbo batteries can be used to power a Quantum Q-flash or a Nikon or<br>Canon speedlight. Appropriate power cords are included) |       |
| Quantum battery II (½ price w/rental of flash) . . . . .                                                                             | 10.00 |

### Lampheads

|                                                                                                                     |       |
|---------------------------------------------------------------------------------------------------------------------|-------|
| QFT5D-R flash . . . . .                                                                                             | 30.00 |
| (QFT5D-R rentals include a Quantum Turbo battery.<br>Can be upgraded to a Quantum Turbo 3 for an additional \$5.00) |       |
| QFX2D (includes 400B battery and adptr.) . . . . .                                                                  | 30.00 |

### Accessories

|                                                 |      |
|-------------------------------------------------|------|
| Quantum Battery cords (w/out battery) . . . . . | 2.00 |
| Quantum Q Flash Quick release bracket . . . . . | 2.00 |
| QF TTL & QTTL cords. . . . .                    | 2.00 |

# TUNGSTEN LIGHTING

|                                                                                                                      |       |
|----------------------------------------------------------------------------------------------------------------------|-------|
| Lowel Tota kit . . . . .                                                                                             | 60.00 |
| (Includes: (2) 600w Omni lights, (2) 1000w Tota lights,<br>(4) stands, (2) umbrellas, scrims, barndoors, and case)   |       |
| Smith Victor K50 kit . . . . .                                                                                       | 30.00 |
| (Includes: (3) 600w lights, stands, barndoors, (2) scrims and case)                                                  |       |
| Smith Victor K2R kit . . . . .                                                                                       | 20.00 |
| (Includes: (3) 600w lights, (3) stands, and case)                                                                    |       |
| Arri Arrilite/Fresnel Mini Kit . . . . .                                                                             | 75.00 |
| (Includes: (2) 300w focusing fresnel lights, (2) 650w focusing fresnel<br>lights,stands, barndoors, scrims and case) |       |
| Arri 150 Plus Fresnel. . . . .                                                                                       | 10.00 |
| Arri 300 Plus Fresnel. . . . .                                                                                       | 15.00 |
| Arri 650 Plus Fresnel. . . . .                                                                                       | 20.00 |
| Scrims, Barndoors for Arri Fresnels . . . . .                                                                        | 2.00  |
| Arri 1000 Miniflood . . . . .                                                                                        | 25.00 |
| Arri Soft 2000 (w/ removable grid) . . . . .                                                                         | 25.00 |
| Colortran light 1000w . . . . .                                                                                      | 15.00 |
| Colortran light 650w . . . . .                                                                                       | 10.00 |
| Lowel DP light 1000w (w/barndoor and scrim) . . . . .                                                                | 15.00 |
| Lowel Tota light 1000w . . . . .                                                                                     | 15.00 |
| Lowel Omni light 650 w . . . . .                                                                                     | 10.00 |
| Smith Victor #740 650w (w/barndoor) . . . . .                                                                        | 10.00 |
| Smith Victor 500w photo floods . . . . .                                                                             | 5.00  |
| De Sisti Monet 210 1000w fresnel . . . . .                                                                           | 20.00 |
| De Sisti Monet 220 2000w fresnel . . . . .                                                                           | 30.00 |
| Dimmers (to adjust the power output of any tungsten light) . . . . .                                                 | 3.00  |

# METERS

|                                                                  |       |
|------------------------------------------------------------------|-------|
| Gossen Ultra Pro . . . . .                                       | 10.00 |
| Gossen Starlite (1-5 degree spot meter. Ambient only.) . . . . . | 15.00 |
| Sekonic L328 (Flash and ambient) . . . . .                       | 10.00 |

# CAMERA SYNCS/ TRIPPERS

### Photo Slaves

|                        |      |
|------------------------|------|
| Peanut slave . . . . . | 2.00 |
| Super slave . . . . .  | 5.00 |

### Radio Slave

|                                                                                                                           |       |
|---------------------------------------------------------------------------------------------------------------------------|-------|
| Pocket Wizard Plus II transceiver . . . . .                                                                               | 15.00 |
| (Includes sync cord to connect to flash)                                                                                  |       |
| Pocket Wizard sync cords . . . . .                                                                                        | 2.00  |
| (If rented w/o Pocket Wizard. Available cords include PC1 (PC),<br>MH1 (household), MPI(1/4" phono) and MM1 (1/8" phono)) |       |
| Pocket Wizard motor drive cords . . . . .                                                                                 | 5.00  |
| (Used to trigger Canon or Nikon camera. Will also work w/ Wave Sensor)                                                    |       |

### Beam/Sound Trippers

|                                                                                                                                             |       |
|---------------------------------------------------------------------------------------------------------------------------------------------|-------|
| Pocket Wizard wave sensor                                                                                                                   | 25.00 |
| (Light and sound triggering device for split second timing. Includes choice of sync cord. Motor drive cords available at additional charge) |       |
| Dale Beam Trippers                                                                                                                          | 25.00 |
| (Light and sound triggering device for split second timing.)                                                                                |       |
| Wein SST sound tripper                                                                                                                      | 5.00  |
| (Trips flash via adjustable sound sensor.)                                                                                                  |       |

### Infra-Red Slaves and Remotes

|                                                                                                                |      |
|----------------------------------------------------------------------------------------------------------------|------|
| Nikon ML-L3 wireless remote                                                                                    | 3.00 |
| (compatible w/ D7000, D600 and other consumer-grade bodies.<br>Not compatible w/ D800, D4 or other pro bodies) |      |

### Cable Releases

|                                                                          |      |
|--------------------------------------------------------------------------|------|
| Nikon MC-30 (10-pin) remote release                                      | 3.00 |
| Nikon MC-36 (10-pin) timer control                                       | 5.00 |
| Canon TC-80N3 timer control                                              | 5.00 |
| (For cameras w/ 3-pin connection. Not compatible w/ 70D or Rebel series) |      |
| RS-60E3 remote release                                                   | 5.00 |
| (For EOS 60D and Rebel series DSLRs)                                     |      |
| 12" - 24" cable release                                                  | 1.00 |

# GRIP EQUIPMENT

### Stands

|                                                  |       |
|--------------------------------------------------|-------|
| 9' stand                                         | 2.00  |
| 11' stand                                        | 3.00  |
| 13' stand                                        | 4.00  |
| 19 1/2' Super Hi overhead roller stand           | 10.00 |
| 26' Super Hi overhead stand                      | 15.00 |
| C-stand (10.5' or 5.25')                         | 4.00  |
| C-stand w/40" or 20" extension arm and grip head | 5.00  |
| C-stand w/60" double riser                       | 8.00  |
| Backlight stand                                  | 2.00  |
| Avenger F1000 pump cup with baby swivel pin      | 5.00  |
| 1 1/8" to 5/8" pin                               | 1.00  |
| Stand adapter (5/8" or 3/8" to 1/4"20)           | 1.00  |

### Overhead Silk

|                                                    |       |
|----------------------------------------------------|-------|
| 12'x12' overhead silk kit                          | 50.00 |
| (12'x12' frame, 12'x12' silk, (2) 19 1/2' stands.) |       |

### Booms

|                                                                                                                                          |       |
|------------------------------------------------------------------------------------------------------------------------------------------|-------|
| Matthews Magic Stand/Boom                                                                                                                | 20.00 |
| (Stand and boom are one unit, includes rolling base. Max weight 40 pounds)                                                               |       |
| Bogen Superboom                                                                                                                          | 15.00 |
| (Geared controls at bottom of boom allow movement of head while raised, includes rolling stand and counterweight. Max weight 15 pounds.) |       |
| Bogen Avenger Junior Boom D650                                                                                                           | 15.00 |
| (Includes counterweight. Requires 19 1/2' or 26' Hi Overhead or equivalent stand, not included. Max weight 22 pounds)                    |       |
| Bogen 6' boom                                                                                                                            | 5.00  |
| (Includes counterweight, stand not included. Max weight 6.6 pounds)                                                                      |       |
| Bogen Combi Boom                                                                                                                         | 5.00  |
| (Stand and boom are one unit, includes counterweight. Max weight 4.5 pounds)                                                             |       |

### Clamps

|                                   |      |
|-----------------------------------|------|
| A-clamps: small                   | .25  |
| medium                            | .50  |
| large                             | .75  |
| Alligator clamps                  | .50  |
| Bogen Super clamp w/ camera mount | 2.00 |
| Bogen Magic Arm                   | .50  |

### Flags

|                                    |       |
|------------------------------------|-------|
| 14"x 8" solid w/ flexible arm      | 3.00  |
| 48"x 48" solid black w/ frame      | 7.00  |
| 5'x6' black/gold folding reflector | 10.00 |

### Apple Boxes

|                                                        |       |
|--------------------------------------------------------|-------|
| 19"x11"x8", 19"x11"x4", 19"x11"x2" or 19"x11"x1" . . . | 3.00  |
| Set of 4                                               | 10.00 |

### AC Extension Cords

|             |      |
|-------------|------|
| 25 foot     | 2.00 |
| 50 foot     | 3.00 |
| 100 foot    | 4.00 |
| Power strip | 3.00 |
| Power Squid | 3.00 |

### Background Holder Systems

|                                                |       |
|------------------------------------------------|-------|
| 12' set-up: (2) 9' stands and (1) 12' crossbar | 10.00 |
| 20' set-up: (3) 13' stands, (2) 10' crossbars  | 15.00 |
| 10' or 12' crossbars only                      | .50   |
| Additional 10' crossbar and 13' stand          | 5.00  |
| J-hooks (set of 2)                             | 5.00  |

### Sandbags

|      |      |
|------|------|
| 15lb | 2.00 |
| 25lb | 3.00 |

# CAMERA SUPPORT

### Tripods

|                         |       |
|-------------------------|-------|
| Tiltall                 | 10.00 |
| Bogen 3001              | 10.00 |
| Bogen 3035, 3050, 3051  | 15.00 |
| Bogen fluid head        | 20.00 |
| Bogen monopod           | 5.00  |
| Gitzo Tele Studex Giant | 25.00 |
| Bogen side arm          | 5.00  |
| Tripod dolly            | 3.00  |

### Camera Brackets/Heads

|                                       |      |
|---------------------------------------|------|
| Gitzo G1372 3-D head                  | 5.00 |
| Foba super ball head                  | 5.00 |
| Bogen 3262QR quick-release ball head  | 4.00 |
| Ball heads - small                    | 3.00 |
| Strobframe (large or small)           | 3.00 |
| Custom QRS-35 Rotating Bracket        | 5.00 |
| Quantum Q Flash quick release bracket | 2.00 |

### Gyro Stabilizers

|              |        |
|--------------|--------|
| Ken-Lab KS-8 | 100.00 |
|--------------|--------|

# SOFTBOXES/ UMBRELLAS

## Umbrellas

|                                                            |       |
|------------------------------------------------------------|-------|
| 36" and 44" .....                                          | 2.00  |
| 60" .....                                                  | 3.00  |
| 44" Photek Softlighter .....                               | 5.00  |
| 60" Photek Softlighter .....                               | 5.00  |
| 84" Photek Sunbuster diffusion umbrella .....              | 20.00 |
| (Will not fit in standard umbrella mounts. Requires stand) |       |

## Overhead Silk

|                                                   |       |
|---------------------------------------------------|-------|
| 12'x12' overhead silk kit .....                   | 50.00 |
| (12'x12' frame, 12'x12' silk, (2) 19 1/2' stands) |       |

## Flash Accessories

|                                                      |       |
|------------------------------------------------------|-------|
| Photek Digital Lighthouse 10" x 13" .....            | 10.00 |
| Photek Digital Lighthouse 24" x 36" .....            | 20.00 |
| Flexfill bracket w/gooseneck for 38" reflector ..... | 2.00  |
| 5/1 Flexfill 42" reflector .....                     | 5.00  |
| (white/gold/silver/black/transparent)                |       |
| 6" colored gels for heads .....                      | .25   |

# PHOTOFLEX

|                         |      |
|-------------------------|------|
| Photoflex 12"x16" ..... | 5.00 |
|-------------------------|------|

# CHIMERA

(Super Pro Banks: Recessed front screen to control flare,  
silver interior for slightly more specular light)

|                                                                                                                                                    |       |
|----------------------------------------------------------------------------------------------------------------------------------------------------|-------|
| Chimera Video Pro extra small: 16" x 22" .....                                                                                                     | 10.00 |
| (Can use hot lights up to 750 watts. We have speedrings available for the Arri 650, Arri 300, Lowel DP and Lowel Tota )                            |       |
| Chimera Super Pro small: 24"x 32" .....                                                                                                            | 5.00  |
| Chimera Super Pro medium: 36"x 48" .....                                                                                                           | 10.00 |
| Chimera Super Pro large: 54"x 72" .....                                                                                                            | 15.00 |
| Chimera Pro II medium strip: 14"x 56" .....                                                                                                        | 15.00 |
| Chimera OctaPlus 5: 60" diameter .....                                                                                                             | 30.00 |
| Chimera OctaPlus 57: 84" diameter (Octaplus 5 w/ extension) .....                                                                                  | 40.00 |
| Speedrings only .....                                                                                                                              | 2.00  |
| (We have speedrings available for Alien Bee, Arri, Balcar, Broncolor, Dyalite, Lowel, Norman, Photogenic, Profoto, Speedotron and White Lightning) |       |

# PLUME

(Plume Wafer banks: narrow profile, silver interior with unique inner baffles which create at least four choices of light contrast across the removable front diffusion panel)

|                                         |       |
|-----------------------------------------|-------|
| Plume Wafer 75 22" x30" .....           | 5.00  |
| Plume Wafer 100 30"x40" .....           | 8.00  |
| Plume Wafer 140 40"x54" .....           | 10.00 |
| Plume Wafer 200 54"x78" .....           | 15.00 |
| Plume Hexoval 38"x52" (six sided) ..... | 15.00 |
| Plume Strip 140 20"x54" .....           | 15.00 |
| Plume Strip 200 28"x78" .....           | 20.00 |
| Speedrings only .....                   | 2.00  |

# AUDIO/ VISUAL

## Projectors

|                                                     |        |
|-----------------------------------------------------|--------|
| Epson EX 5210 LCD Projector (2800 Lumens) .....     | 125.00 |
| Epson LCD Projector (1200 Lumens) .....             | 100.00 |
| Epson LCD Movie Mate DVD Projector (1200 Lumens) .. | 110.00 |
| Overhead projector .....                            | 15.00  |
| Opaque projector .....                              | 20.00  |

## Slide Projectors

|                                                  |       |
|--------------------------------------------------|-------|
| Kodak 760H slide projector .....                 | 15.00 |
| Kodak 850H slide projector .....                 | 20.00 |
| Kodak Ektagraphic AF-1/AF-2 .....                | 20.00 |
| Kodak Ektagraphic IIIA (w/4"-6" zoom lens) ..... | 20.00 |
| Kodak Ektagraphic 5600 (w/4"-6" zoom lens) ..... | 20.00 |
| Singer Caramate cassette slide projector .....   | 15.00 |
| (w/built-in screen)                              |       |

## Audio Visual Accessories

|                                                      |       |
|------------------------------------------------------|-------|
| Sharp cassette recorder w/slide sync system .....    | 20.00 |
| Kodak 4"x6" zoom projection lens .....               | 5.00  |
| Navitar 2" lens F2.8 (wide angle) .....              | 8.00  |
| Stack loader .....                                   | 2.00  |
| Piggyback (for stacking projectors) .....            | 3.00  |
| Slide carousel (80 slide capacity) .....             | 1.00  |
| 25' remote extension cord for slide projectors ..... | 2.00  |
| 50' remote extension cord for slide projectors ..... | 3.00  |
| AV cart. ....                                        | 10.00 |
| Laser pointer. ....                                  | 5.00  |
| Flip chart holder (w/o paper) .....                  | 5.00  |
| Dry Erase Board. ....                                | call  |

## Dissolve Units

|                                         |       |
|-----------------------------------------|-------|
| Micro Diamond slide dissolve unit ..... | 20.00 |
| Tiffen dissolve w/cassette .....        | 25.00 |

## 8mm/16mm Movie Projectors

|                              |       |
|------------------------------|-------|
| 8mm/S8 movie projector ..... | 20.00 |
| 16mm movie projector .....   | 20.00 |

## Projection Screens

|                                                                |       |
|----------------------------------------------------------------|-------|
| 40"x40" screen (3'x3') .....                                   | 5.00  |
| 50"x50" screen (4'x4') .....                                   | 7.00  |
| 60"x60" screen (5'x5') .....                                   | 8.00  |
| 70"x70" screen (6'x6') .....                                   | 10.00 |
| 78"x44" screen (16:9 ratio optimized for LCD projectors) ..... | 15.00 |
| 72"x96" screen (6'x8') .....                                   | 15.00 |
| 84"x84" screen (7'x7') .....                                   | 15.00 |
| 96"x96" screen (8'x8') .....                                   | 20.00 |

## Light Tables

|                                                       |       |
|-------------------------------------------------------|-------|
| AccuLight viewing table 15" x24": 5000 degree K ..... | 10.00 |
| Light Table 2'x3' .....                               | 20.00 |

# VIDEO

## Camcorders (3 day week)

|                                         |       |
|-----------------------------------------|-------|
| Digital Sony HDR-CX150                  | 75.00 |
| (may not work with Macintosh computers) |       |
| Digital Sony DCR-SR80 60GB HDD          | 75.00 |
| (may not work with Macintosh computers) |       |
| Digital Sony DVD101 mini DVD            | 75.00 |
| Digital Sony DCR-TRV19 mini DV          | 50.00 |
| Sony DCR-TRV130 Digital 8 camcorder     | 60.00 |
| Sony TRV98 HI-8 camcorder               | 50.00 |
| Super VHS Panasonic camcorder           | 50.00 |
| VHS camcorder                           | 40.00 |
| VHS-C Panasonic PV-L 550D camcorder     | 35.00 |

## Camcorder Accessories

|                                    |        |
|------------------------------------|--------|
| Video tripod                       | 10.00  |
| Bogen fluid head tripod            | 20.00  |
| ITE heavy-weight fluid head tripod | 25.00  |
| Switronix TL-50 TorchLED           | 10.00  |
| Ken-Lab KS-8 Gyro Stabilizer       | 100.00 |

## Digital Video Equipment

|                                                    |        |
|----------------------------------------------------|--------|
| Digital Sony HDR-CX150                             | 75.00  |
| (may not work with Macintosh computers)            |        |
| Digital Sony DCR-SR80 60GB HDD                     | 75.00  |
| (may not work with Macintosh computers)            |        |
| Digital Sony DVD101 mini DVD                       | 75.00  |
| Digital Sony DCR-TRV19 mini DV                     | 50.00  |
| Sony DCR-TRV130 Digital 8 camcorder                | 60.00  |
| Epson EX 5210 LCD Projector (2800 Lumens)          | 125.00 |
| Epson LCD Projector (1200 lumens)                  | 100.00 |
| Epson 3LCD MovieMate 55 Projector (1200 Lumens)    | 110.00 |
| Dazzle Hollywood DV-Bridge                         | 15.00  |
| (Converts analog video & sound to DV via Firewire) |        |
| HP DVD Writer (6P Firewire)                        | 10.00  |
| 15' Firewire cord 6P-6P                            | 2.00   |
| 15' Firewire cord 4P-6P                            | 2.00   |
| 6' Firewire cord 6P-6P                             | 1.00   |
| 6' Firewire cord 4P-6P                             | 1.00   |
| DVI to VGA cable                                   | 5.00   |

## Microphones and accessories

|                                                                                                                                    |       |
|------------------------------------------------------------------------------------------------------------------------------------|-------|
| Azden wireless lavalier mic                                                                                                        | 15.00 |
| Azden ECZ-990 Zoom mic                                                                                                             | 10.00 |
| Azden SGM-2X Shotgun mic                                                                                                           | 20.00 |
| (includes XLR to 1/8" phono adapter)                                                                                               |       |
| Nady Encore Duet wireless lavalier dual mic system                                                                                 | 40.00 |
| (Signal from 2 wireless mics can be input into camera as a single signal.<br>Mics are battery powered, receiver requires AC power) |       |
| External hand-held mic w/16' cord                                                                                                  | 5.00  |
| 10' XLR female to 1/8" phono male cord                                                                                             | 5.00  |
| 50' XLR female to XLR male cord                                                                                                    | 10.00 |

## DSL Video Accessories

|                                   |       |
|-----------------------------------|-------|
| Switronix TL-50 TorchLED          | 10.00 |
| juicedLink DT-454                 | 30.00 |
| (Adapter / Preamp / AGC Disabler) |       |

## VCR'S & DVD Players

|                                               |       |
|-----------------------------------------------|-------|
| Multi format VCR                              | 30.00 |
| (PAL, NTSC, SECAM)                            |       |
| Dual Deck VCR                                 | 25.00 |
| Panasonic AG 7350 S-VHS                       | 50.00 |
| Coby Multi Format DVD player                  | 10.00 |
| 9" monitor/VCR                                | 10.00 |
| (AC/DC cig. adapter and harness for auto use) |       |
| 13" monitor/VCR                               | 30.00 |
| 19" monitor/VCR                               | 40.00 |

## Monitors

|                   |       |
|-------------------|-------|
| 13" color monitor | 10.00 |
| 19" color monitor | 20.00 |
| 26" color monitor | 30.00 |

## Video Special Equipment

|                                         |        |
|-----------------------------------------|--------|
| Elmo S8 or R8 transfer projectors       | 150.00 |
| (8mm movie film to video transfer unit) |        |
| Elmo TRV-35G                            | 100.00 |
| (Slide to video transfer unit)          |        |
| Sima video edit                         | 10.00  |
| (audio and video editor)                |        |
| Fotovix                                 | 25.00  |
| (slide to video transfer unit)          |        |
| Character generator/titler              | 25.00  |
| VHS-C to VHS adapter                    | 2.00   |

# SPECIAL EQUIPMENT

|                                                                                                                                                   |        |
|---------------------------------------------------------------------------------------------------------------------------------------------------|--------|
| Ice cubes                                                                                                                                         | 2.00   |
| Set of 20 ice cubes                                                                                                                               | 20.00  |
| Rosco 1000 fog machine                                                                                                                            | 35.00  |
| (1/4 liter fog juice included in price of rental.<br>Add'l fog juice is \$7.50 per 1/4 liter.)                                                    |        |
| Posing stool                                                                                                                                      | 5.00   |
| Avenger F1000 pump cup with baby swivel pin                                                                                                       | 5.00   |
| Ken-Lab KS-8 Gyro Stabilizer                                                                                                                      | 100.00 |
| Photogenic Ion                                                                                                                                    | 20.00  |
| (Lithium-ion battery and pure sine wave inverter, can be used to power<br>Photogenic Powerlights and other strobes in locations with no AC power) |        |
| Extra battery for Photogenic Ion                                                                                                                  | 10.00  |

## Copy Equipment

|                                           |       |
|-------------------------------------------|-------|
| Copy stand                                | 10.00 |
| Chroma Pro slide duplicator (Nikon mount) | 25.00 |

## Filters

|                                                                 |       |
|-----------------------------------------------------------------|-------|
| (Polarizer, 81A, CC30M, FLD, FLB, Red, Yellow, Star, Diffusion) |       |
| 49mm-58mm                                                       | 1.00  |
| 62mm-77mm                                                       | 2.00  |
| 49-58mm circular polarizer                                      | 2.00  |
| 62-77mm circular polarizer                                      | 3.00  |
| 77mm graduated warming filter                                   | 5.00  |
| 82mm circular polarizer or Neutral Density (2ND)                | 5.00  |
| Singh-Ray 77mm Variable Neutral Density filter                  | 15.00 |

## Cases

We carry a large selection of cases for shipping your equipment . . . . . call

**IN ADDITION TO RENTAL, CAMREN SELLS PHOTOGRAPHIC EQUIPMENT AND SUPPLIES. CAMREN IS A DEALER FOR THE FOLLOWING COMPANIES:**

**A**

**Avenger** . . . . . studio grip equipment

**B**

**Bogen** . . . . . tripods, studio accessories

**C**

**Chimera**. . . . . lightboxes, accessories

**D**

**Denny Manufacturing** . . . . . backdrops, props, studio acc.

**G**

**Gossen** . . . . . light meters

**L**

**Lightware** . . . . . cases

**M**

**Mamiya** . . . . . cameras, lenses

**N**

**Norman** . . . . . lighting, accessories

**O**

**Omega/Brandess** . . . . . miscellaneous equipment

**P**

**Plume** . . . . . lightboxes, accessories

**Pocket Wizard** . . . . . radio remotes

**Q**

**Quantum** . . . . . batteries, radio slaves, meters, accessories

**S**

**Sekonic** . . . . . meters

**Speedotron** . . . . . lighting equipment

**Superior Specialties** . . . . . backdrop paper, backdrops,  
studio accessories

# CAMREN PHOTOGRAPHIC RESOURCES

1340 W Byers Pl  
Denver, CO 80223  
303-698-1797

- STUDIO C
- VIDEO TRANSFER ROOM (for movies, prints & slides to video)

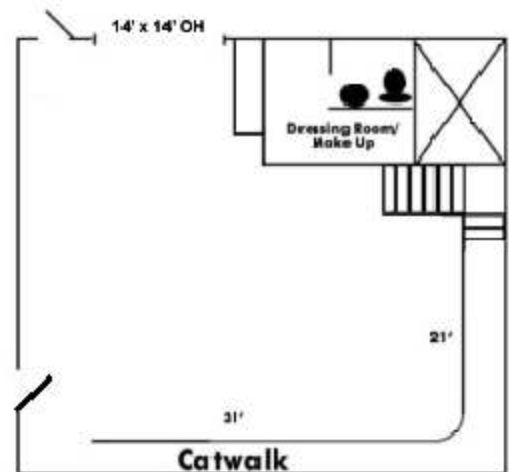
\$30/HR - \$250/DAY  
\$30/HR

## FEATURES OF CAMREN RENTAL STUDIO

- 17' high ceiling, 14'x14' overhead garage door.
- Private security door to rear parking area. Personal security code allows access only to those with code.
- Monitored security system with activation via personal security code.
- Refrigerator, microwave and oven
- 24 hour a day, 7 day a week secured access.
- Private phone. Fax service available during business hours.
- Access to showroom during business hours.

## STUDIO C

- Dressing/make-up room with dressing area and 3 make-up areas.
- Private bathroom.
- Conference table.
- Heavy-duty 30 amp wiring for power intensive jobs.
- 2 wall cyclorama 13' high, 21'x31' w/5' coved radius. (Painting is not included in price. Customer is responsible for cyc painting. Paint used must be interior flat latex, any color may be used)
- Catwalk with 30 amp power.
- Lighting package available at no extra charge with rental of studio, includes:  
Speedotron 2401A power pack, (3) 102 lampheads, (3) stands, and (3) umbrellas.



To see photos of the studio, check out our website at:  
<http://www.camren.com/facility/studioc.html>

## GENERAL TERMS AND CONDITIONS

- 1. ACCEPTANCE.** I, Lessee, agree to the terms and conditions on both sides of this agreement in consideration for the rental usage of the equipment, and any purchase, if applicable. I agree to the payment of all charges, fees, repair costs, and penalty fees.
- 2. RESERVATIONS/CANCELLATIONS.** Reservations for equipment are recommended, as many items are one of a kind. Confirmed reservations are subject to a cancellation fee of 100% of the full rental rate and penalty fees, if applicable.
- 3. RENTAL CHARGES.** The minimum rental charge is a one day charge. A rental day is a 24 hour period from time the equipment leaves Lessor. Equipment picked up on a Friday and returned within 72 hours will be charged a one day rental rate. The weekly rate is four times the daily rate. The monthly rate is twelve times the daily rate. Rental charges will continue during absence of equipment due to loss or damage. All prices and specifications are subject to change without notice. **Rental charges will be assessed whether the equipment is used or not. Rental charges are for time out not time used!**
- 4. LATE RETURNS.** Time is the essence of this agreement. Equipment not returned on time will be subject to additional rental charges which shall be a minimum of one additional rental day. Penalty fees will be assessed at Lessor's discretion.
- 5. DEPOSITS.** A deposit is required on all rentals. The deposit shall be in the form of one of the following: a) a local check drawn on a local bank, b) Visa, MasterCard, or American Express credit cards, c) full cash retail value. Debit and check cards may not be used for security deposit. The deposit may be held pending repair or replacement of rental equipment. Rental charges will continue during absence of equipment due to loss or damage. Proof of insurance coverage acceptable to Lessor may be required on some rentals. Lessee, by giving lessor deposit, authorizes the Lessor to use deposit for payment of rental charges, repair, replacement, services, goods, penalty fees, and/or any other payment owed Lessor by Lessee.
- 6. LOSS, THEFT, OR DAMAGE.** The Lessee assumes entire risk of loss or damage to equipment during rental. Rental charges will continue during absence of equipment due to loss or damage. Any damage to or loss of equipment must be paid in full to Lessor on demand. Title to equipment and the right to, at any time, terminate lease and recover possession, if not returned on demand, remains with Lessor. All charges, including attorney's fees incurred in recovering equipment not returned on demand, remain with Lessee. A non-refundable 10% damage/loss fee, based on the total rental charge, is available for Lessee to purchase from Lessor. If Lessee elects to accept the 10% damage/loss fee Lessee agrees that they are liable for the first \$500.00 of damage or loss of equipment. Lessee will be held harmless for damage or loss exceeding \$500.00 unless such damage or loss:
- is caused by intentional, willful, negligent, or careless actions or inaction by Lessee or any other person while equipment is rented to Lessee;
  - is due to rain or other moisture;
  - is due to scratching of lens;
  - is due to internal adjustments or repairs by unauthorized persons;
  - occurs during shipping or transportation by common carrier;
  - is due to unexplained loss or disappearance;
  - occurs by theft from an unlocked or visually open vehicle;
  - occurs by theft unreported to local police within 48 hours of the theft;
  - is caused by or results from warlike actions of Lessee or others (including any government) including loss due to seizure or confiscation.
- 7. MALFUNCTIONS.** Equipment is rigorously tested before being offered for rental. Nevertheless we strongly suggest the Lessee check out the equipment before accepting it. Our program of maintenance and inspection prevents most problems, but it is not possible even with the most meticulous inspection to duplicate all the conditions found in the field, nor is it possible to predict all failures. Lessor must be notified of any and all problems immediately. Failure to do so can result in a full rental charge.
- 8. SPARE BULB/INSTRUCTION BOOK POLICY.** Equipment rental price includes bulbs. Spare bulbs are provided on request. There is no charge for the use of spare bulbs providing burned out bulbs are returned. A charge will be made for missing bulbs, broken bulbs or excessive burnouts. Instruction books will be supplied on request. Instruction books not returned will be charged for.
- 9. EXCLUSION OF WARRANTIES OF MERCHANTABILITY AND WARRANTIES OF FITNESS. LIMITATION OF LESSOR'S LIABILITY.** Lessee warrants that Lessee or Lessee's agent is trained and can utilize equipment. Lessee agrees that Lessor shall not be responsible for Lessee's inability to utilize rented equipment for any reason including insufficient knowledge of the equipment. In the event Lessee is unable to utilize the equipment due to Lessee's insufficient training or knowledge, or for any other reason, Lessee agrees to hold Lessor harmless from any damage or loss from the failure or inability to use the equipment. Lessee agrees that Lessor has no duty to instruct or train Lessee in the use of equipment, and that any information regarding the equipment is given as a courtesy and is not part of the rental agreement. Lessor reserves the right to refuse rental to any person, company or organization for any reason.
- 10. INDEMNITY.** Lessee agrees to hold Lessor harmless and indemnify Lessor in the event of theft, injury, or other loss or damage arising from usage of Lessor's facilities or equipment. Lessee assumes all liability for any and all damage or loss whatsoever, and/or injury incurred, either directly or indirectly to his invitee, agent or employee as a result of using Lessor's facilities or equipment, and for personal property of lessee, invitee, or employee. Equipment is used at customer's sole risk. Lessor shall not be liable beyond the amount of any rental fees for any injury, loss, or damage suffered by customer, directly, indirectly, or consequentially, as a result of mechanical failure, casualty, unavailability of equipment, or otherwise.
- 11. OUT OF TOWN RENTALS.** Minimum billing for out of town rentals is four days when equipment is shipped. The four day billing covers a full seven day rental period. Equipment is to be returned via a prepaid method. Any shipping charges billed to Lessor will be re-billed with a handling charge. Lessor is not responsible for delays caused by carriers. The Lessee is responsible for all rental charges in the event of a delay by the carrier. All equipment is tested before shipping. In the event of a malfunction, the lessee is still responsible for rental, shipping and/or repair charges. Lessor must be notified of any and all problems immediately. Failure to do so can result in a full rental charge.
- 12. FACILITIES.** The studio is rented on an as is basis. Painting coves or floors is the responsibility of the lessee. Paint spraying is not allowed. Lessor can supply painting labor and materials for an additional cost. Call for prices. Lessor's agent shall have the right to enter the rental area and take possession thereof at any time. Premises shall not be used for unlawful acts. No hazardous substances or materials shall be brought on the premises without written permission from Lessor.
- 13. REMEDIES.** Lessee agrees to reimburse Lessor for all costs and expenses of collection of any amounts owed under this, or any other agreement Lessee has entered into with Lessor, including, but not limited to, reasonable attorney's fees, penalty fees, and continuing rental and late charges. Interest charges shall accrue at the rate of 1.75 percent per month on all unpaid balances owed Lessor.
- 14.** All prices and specifications are subject to change without notice.